



DATA SOUND - LABORATORIES -

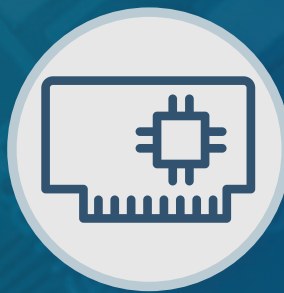
EMBEDDING THE FUTURE



**Electronic
Design**



**Panel
PC / HMI**



**Single Board
Computer**



**Industrial
PC**

Why choose DSL?

- Over 25 Years Industry Experience
- 5 Years Warranty on all Products
- Evaluation Products Available
- Lifetime Technical Support

Our Services

- Electronic Design
- Production Management
- Assembly and Test
- Bespoke BIOS Creation
- Industrial Embedded PC Solutions



Call us on +44(0)1462 675530



Email us at sales@dsl-ltd.co.uk



www.dsl-ltd.co.uk



APC-3x84A/APC-3x85A

(with motherboard SBC-7106)

User Manual

<u>Release Date</u>	<u>Revision</u>
----------------------------	------------------------

Aug. 2015

V1.3

©2015 Aplex Technology, Inc.

All Rights Reserved.

Published in Taiwan

Aplex Technology, Inc.

15F-1, No.186, Jian Yi Road, Zhonghe District, New Taipei City 235, Taiwan

Tel: 886-2-82262881 Fax: 886-2-82262883 E-mail: aplex@aplex.com.tw URL: www.aplextec.com

Revision History

Reversion	Date	Descriptions
1.0	2013/10/03	Official Version
1.1	2013/10/21	Modify CPU, 12.1" LCD, dimensions, and touch interface Spec.
1.2	2014/10/30	17" and 19" change motherboard to SBC-7106A
1.3	2015/08/11	Modify IO Port Serial/Parallel, 12.1" LCD, operating temperature, motherboard and Expansion slot spec., add power consumption spec.

Warning!_____

This equipment generates, uses and can radiate radio frequency energy and if not installed and used in accordance with the instructions manual, it may cause interference to radio communications. It has been tested and found to comply with the limits for a Class A computing device pursuant to FCC Rules, which are designed to provide reasonable protection against such interference when operated in a commercial environment. Operation of this equipment in a residential area is likely to cause interference in which case the user at his own expense will be required to take whatever measures may be required to correct the interference.

Electric Shock Hazard – Do not operate the machine with its back cover removed. There are dangerous high voltages inside.

Disclaimer

This information in this document is subject to change without notice. In no event shall Apex Technology Inc. be liable for damages of any kind, whether incidental or consequential, arising from either the use or misuse of information in this document or in any related materials.

Packing List

Accessories (as ticked) included in this package are:
<input type="checkbox"/> AC power cable
<input type="checkbox"/> Driver & manual CD disc
<input type="checkbox"/> Other. _____ (please specify)

Safety Precautions

Follow the messages below to prevent your systems from damage:

- ◆ Avoid your system from static electricity on all occasions.
- ◆ Prevent electric shock. Don't touch any components of this card when the card is power-on. Always disconnect power when the system is not in use.
- ◆ Disconnect power when you change any hardware devices. For instance, when you connect a jumper or install any cards, a surge of power may damage the electronic components or the whole system.

Table of Contents

Revision History.....	1
Warning!/Disclaimer.....	2
Packing List/Safety Precautions.....	3

Chapter 1 **Getting Started**

1.1 Features.....	6
1.2 Specifications.....	6
1.3 Dimensions.....	8
1.4 Brief Description of APC-3x84A/APC-3x85A.....	9

Chapter 2 **Hardware**

2.1 Mainboard.....	11
2.2 Motherboard Specifications.....	11
2.3 Jumpers Setting and Connectors.....	15

Chapter 3 **BIOS Setup**

3.1 Operations after POST Screen.....	21
3.2 BIOS Setup Utility.....	22
3.3 Main Settings.....	23
3.4 Advanced Settings.....	24
3.5 Chipset Settings.....	30
3.6 Boot Settings.....	34
3.7 Security Settings.....	37
3.8 Save and Exit Settings.....	38

Chapter 4 **Installation of Drivers**

4.1 Intel Chipset Driver.....	41
4.2 Intel Graphics Media Accelerator Driver.....	44
4.3 Intel (R) Network Adapter.....	47
4.4 Realtek ALC662 HD Audio Driver Installation.....	49

Chapter 5

Touch Screen Installation

5.1 Windows 2000/XP USB Driver Installation for PenMount 6000 Series.....	51
5.2 Software Functions.....	55

Figures

Figure 1.1: Dimensions of APC-3284A/APC-3285A.....	8
Figure 1.2: Dimensions of 3584A/APC-3585A.....	8
Figure 1.3: Front View of APC-3X84A.....	9
Figure 1.4: Rear View of APC-3X84A.....	9
Figure 1.5: Front View of APC-3X85A.....	10
Figure 1.6: Rear View of APC-3X85A.....	10
Figure 2.1: Mainboard Dimensions.....	13
Figure 2.2: Jumpers and Connectors Location_ Board Top.....	14
Figure 2.3: Jumpers and Connectors Location_ Board Bottom.....	14

Chapter 1

Getting Started

1.1 Features

- Fanless Design
- Intel® Atom D2550 1.8G Processor
- Onboard 2GB DDR3 800 MHz, 4GB is for option
- 11~32V DC wide-ranging power input
- 5 sides IP 65
- 5-Wire Resistive Touch Screen

1.2 Specifications

	APC-3284A/85A	APC-3584A/85A
System		
CPU	Intel® Atom Processor D2550 1.8G	
Motherboard	SBC-7106	
System Chipset	Intel NM10 Express	
System Memory	Onboard DDR3 2GB (Default), option 4GB	
IO Port		
USB	4 x USB 2.0 type A	
Serial/Parallel	1 x RS-232/422/485 DB-9 selectable, COM1, default RS-485 1 x RS-232 DB-9, COM2 1 x RS-232 DB-9, COM5	
Audio	1 x MIC, Line-out, Line-in phone jack	
LAN	2 x GbE LAN RS-45	
Power	1 x 3-pin terminal block connector 1 x Power switch on/off	
Storage Space		
HDD	1 x 2.5” HDD space	
Movable Device	1 x Internal SD slot onboard	
Expansion		
On board expansion bus	1 x Mini PCIe half size Option wifi/BT with Antenna	
Display		

Display Type	12.1" color TFT-LCD	15" color TFT-LCD
Max. Resolution	800 x 600	1024 x 768
Max. Color	262K	16M
Luminance (cd/m²)	350	400
Viewing Angle	160 (H) / 140 (V)	160 (H) /145 (V)
Contrast Ratio	800 : 1	
Backlight Lifetime	50,000 hrs	
Touch Screen		
Type	Resistive Touch	
Interface	Default RS-232	
Light Transmission	80%	
Power		
Power Input	11~32V DC	
Power Consumption	Max: 15.6W (3284A)	Max: 21.7W (3584A)
	Max: 16.7W (3285A)	Max: 21.4W (3585A)
Mechanical		
Construction	Stainless Steel (APC-3x84A) Steel/Black (APC-3x85A)	
IP Rating	5 sides IP65	
Mounting	VESA mount 75 x 75	
Dimension	330 x 260 x 51 mm	398 x 319 x 51.8 mm
Net Weight (Kgs)	4.3 Kg (APC-3284A)	6.9 Kg (APC-3584A)
	4 Kg (APC-3285A)	6.5 Kg (APC-3585A)
Environmental		
Operating Temperature	0~50°C (with HDD) -20~60°C (with Industrial SSD for 15")	
Storage Temperature	-30~70°C	
Storage Humidity	10 to 90% @ 40°C, non-condensing	
Certification	CE / FCC Class A	
Operating System Support	Microsoft Windows 7 Pro for Embedded, Windows Embedded Standard 7	

1.3 Dimensions

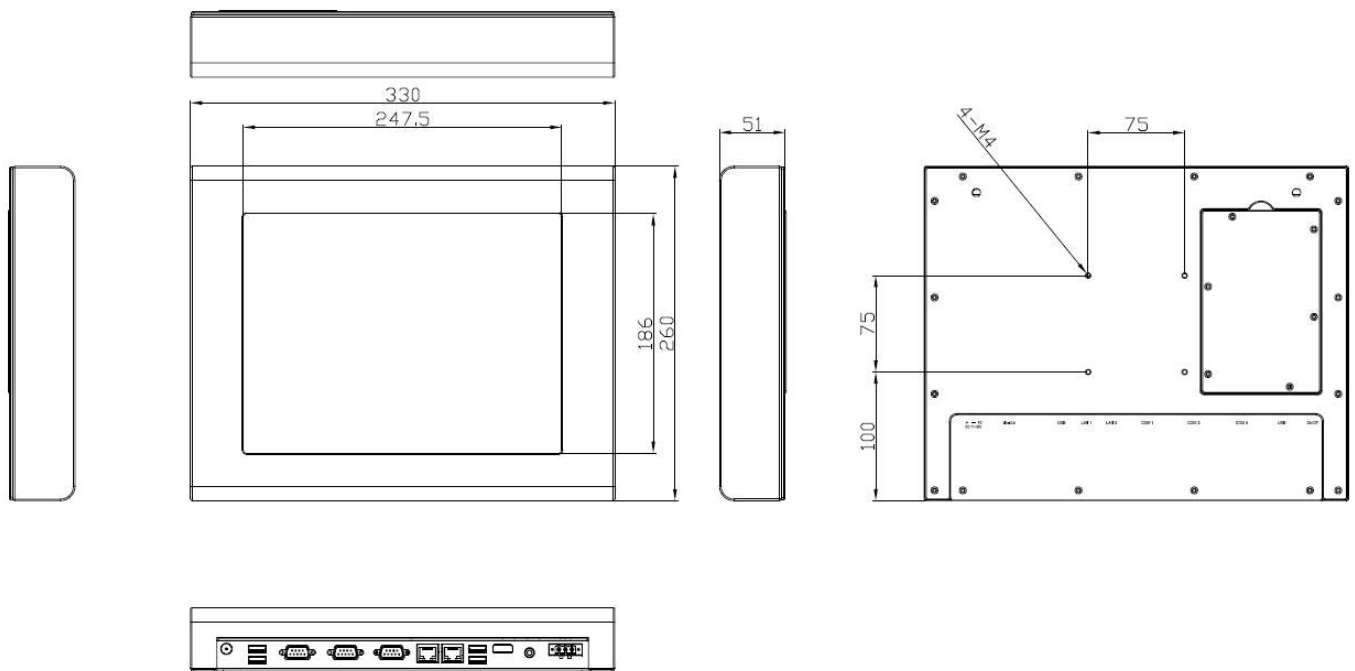


Figure 1.1: Dimensions of APC-3284A/APC-3285A

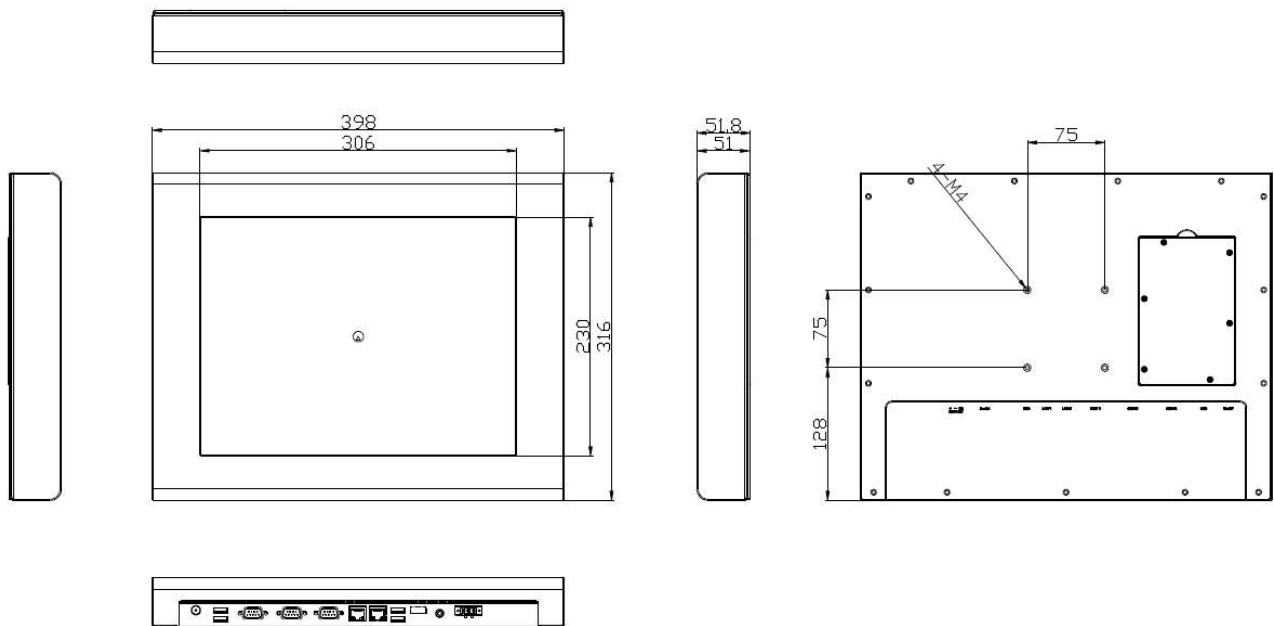


Figure 1.2: Dimensions of APC-3584A/APC-3585A

1.4 Brief Description of APC-3x84A/APC-3x85A

The APC-3x84A/APC-3X85A is the fanless and low power consumption panel-mount industrial panel pc with 12"/15" TFT LCD. It powered by Intel[®] Atom Processor D2550 1.8G. The panel PC comes with a rich variety of functions and peripherals. It comes with 1 x 2.5-inch hard disk drive and 1 x Internal SD slot for data storage , support DDR3 2GB 800 MHz(4GB is for option), support rich I/O, wide range 11~32V DC input, it can ensure simplified connectivity to a variety of external peripheral devices. The OS supports Microsoft Windows 7 pro for embedded, Windows embedded standard 7. The unit deal for a wide range of applications for food/chemical industry, medical, restaurant/kitchen applications, storage management and information segment and so on.



Figure 1.3: Front View of APC-3X84A



Figure 1.4: Rear View of APC-3X84A



Figure 1.5: Front View of APC-3X85A



Figure 1.6: Rear View of APC-3X85A

2.1 Motherboard Introduction

SBC-7106 is a 4" industrial motherboard developed on the basis of Intel Cedarview-M Processors and NM10, which provides abundant peripheral interfaces to meet the needs of different customers. Also, it features dual GbE ports, 3-COM ports and one Mini PCIE configuration, one VGA port, one HDMI port, one LVDS interface. To satisfy the special needs of high-end customers, CN1 and CN2 and CN3 richer extension functions. The product is widely used in various sectors of industrial control.

2.2 Motherboard Specifications

Specifications	
Board Size	170mm x 113mm
CPU Support	Intel Atom N2600 /1.60GHz (2cores, 3.5W, onboard) Intel Atom D2550 /1.86GHz (2cores, 10W, optiona)
Chipset	Intel NM10 Express
Memory Support	Onboard 2GB DDRIII SDRAM (N2600) Onboard 4GB DDRIII SDRAM (D2550)
Graphics	Integrated Intel GMA 3600 (N2600) Integrated Intel GMA 3650 (D2550)
Display Mode	1 x CRT Port 1 x HDMI Port 1 x LVDS1 (18/24-bit single LVDS)
Support Resolution	Up to 1920 x1200 for CRT Up to 1920 x 1200 for HDMI Up to 1366 x768 for LVDS1 (N2600) Up to 1440 x 900 for LVDS1 (D2550)
Dual Display	CRT+LVDS1 CRT+HDMI LVDS1+HDMI
Super I/O	Winbond W83627UHG-E

BIOS	AMIBIOS
Storage	1 x SATA Connector (7P) 1 x SATA Connector (7P+15P) 1 x SD Socket (USB to SD)
Ethernet	2 x PCIe GbE LAN by Realtek RTL8111E
USB	2 x USB 2.0 (type A)stack ports (USB4/USB5) 2 x USB 2.0 Pin header via CN3 (USB2/USB3) 2 x USB 2.0 Pin header via CN1 (USB0/USB1) 1 x USB 2.0 for MPCIE1 (USB7)
Serial	1 x RS-232/RS-422/RS-485, DB9 connector for external (COM1) pin 9 w/5V/12V/Ring select 1 x RS232 port, DB9 connector for external (COM2) pin 9 w/5V/12V/Ring select 1 x RS422/485 header via CN2 (COM3) 2 x UART via CN3 (COM5,COM6)
Digital I/O	8-bit digital I/O Pin header via CN2 4-bit digital Input 4-bit digital Output 4-bit digital I/O Pin header via CN3 2-bit digital Input 2-bit digital Output
Battery	Support CR2477 Li battery by 2-pin header
Audio	Support Audio via Realtek ALC662 HD audio codec Support Line-in, Line-out, MIC by 2x6-pin header
Keyboard /Mouse	1 x PS2 keyboard/mouse 1x6 box pin header via CN3
Expansion Bus	1 x mini-PCI-express slot 1 x PCI-express via CN3
Touch Ctrl	1 x Touch control header for TCH1 (COM4)
Power Management	Wide Range DC 9~36V input 1 x 3-pin power input connector
Switches and LED Indicators	1 x Power on/off switch via CN1 1 x Reset switch via CN1 1 x Power LED status via CN1

	1 x HDD LED status via CN1 1 x Buzzer
External I/O port	2 x COM Ports (COM1/COM2) 2 x USB 2.0 Ports (stack) 2 x GbE LAN Ports 1 x HDMI Port 1 x Stack audio Jack (Line out)
Watchdog Timer	Software programmable 1 – 255 second by Super I/O
Temperature	Operating: -20°C to 70°C Storage: -40°C to 85°C
Humidity	5% - 95%, non-condensing, operating
Power Consumption	12V /0.95A (Intel Atom N2600 processor with 2GB DDR3 DRAM)
EMI/EMS	Meet CE/FCC class A

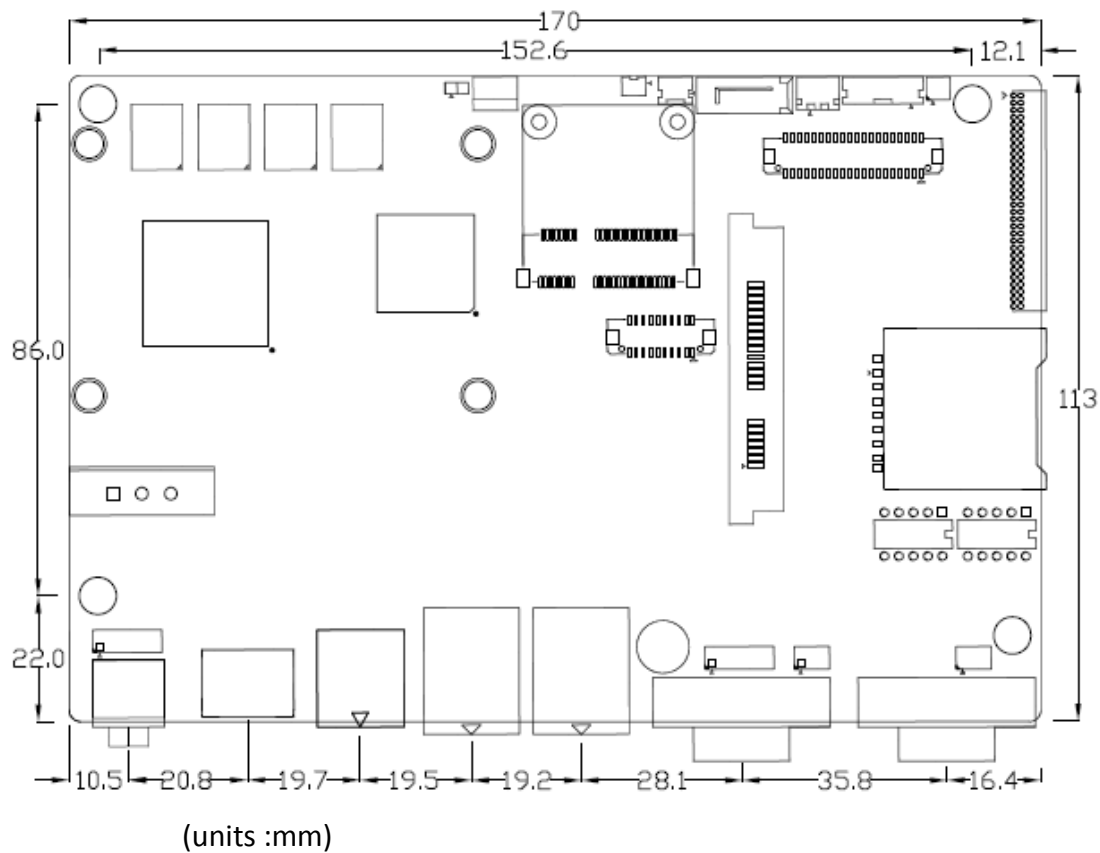


Figure 2.1: Mainboard Dimensions

2.2.1 Jumpers Setting and Connectors

Board Top

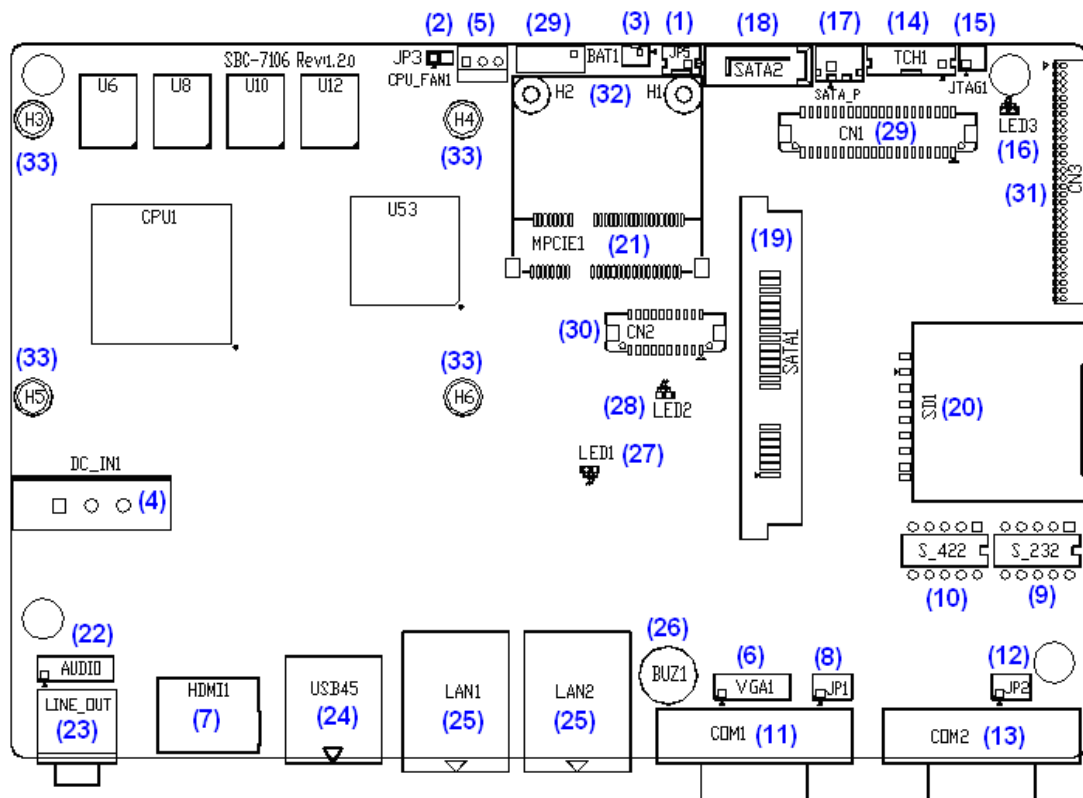


Figure 2.2: Jumpers and Connectors Location_ Board Top

Board Bottom

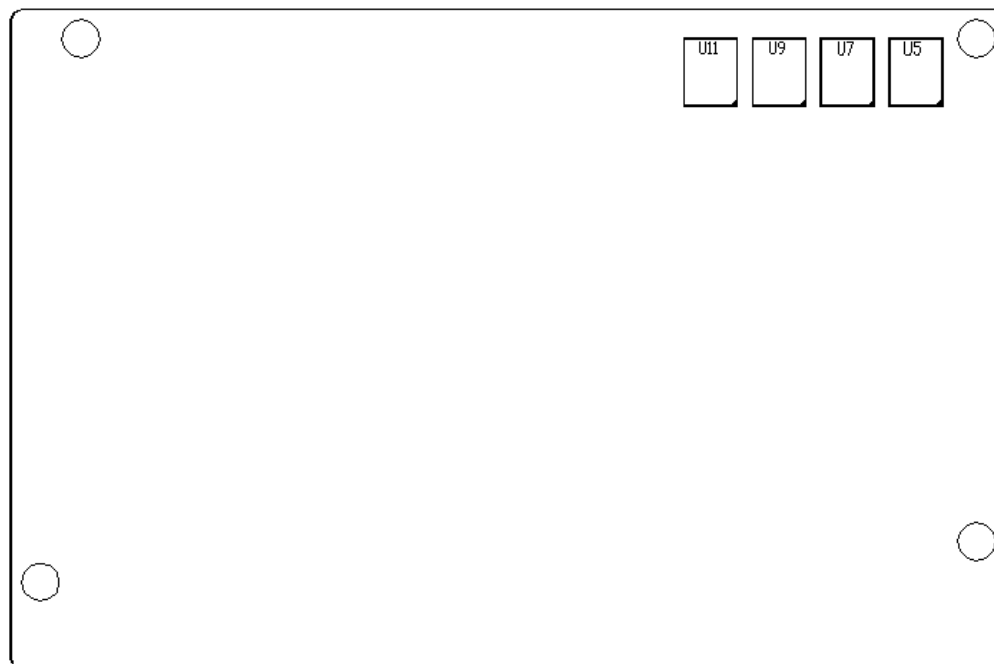


Figure 2.3: Jumpers and Connectors Location_ Board Bottom

2.3 Jumpers Setting and Connectors

1. JP5:

(2.0mm Pitch 1X2 box Pin Header), ATX Power and Auto Power on jumper setting.

JP5	Mode
Open	ATX Power
Close	Auto Power on (Default)

3. BAT1 :

(1.25mm Pitch 1X2 box Pin Header) 3.0V Li battery is embedded to provide power for CMOS.

Pin#	Signal Name
Pin1	VBAT
PIN2	Ground

4. DC IN1:

(5.08mm Pitch 1x3 Pin Connector), DC9V~36V System power input connector.

Pin#	Power Input
Pin1	DC+9V~32V
Pin2	Ground
Pin3	FG

6. VGA1:

(CRT 2.0mm Pitch 2X6 Pin Header), Video Graphic Array Port, Provide 2x6Pin cable to VGA Port.

Signal Name	Pin#	Pin#	Signal Name
CRT_RED	1	2	Ground
CRT_GREEN	3	4	Ground
CRT_BLUE	5	6	Ground
CRT_H_SYNC	7	8	CRT_DDCDATA
CRT_V_SYNC	9	10	CRT_DDCCLK
Ground	11	12	Ground

9. RS-232:

(Switch),COM1 jumper setting, it provides selectable RS232 or RS422 or RS485 serial signal output.

Function	S_232 Pin#
RS232 (Default)	ON: Pin1, Pin2, Pin3, Pin4
RS422 (option)	OFF: Pin1, Pin2, Pin3, Pin4
RS485 (option)	OFF: Pin1, Pin2, Pin3, Pin4

10. RS-422:

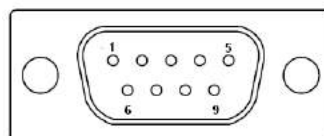
(Switch),COM1 setting, it provides selectable RS232 or RS422 or RS485 serial signal output.

Function	RS_422 Pin#
RS232 (Default)	OFF: Pin1, Pin2, Pin3, Pin4
RS422 (option)	ON: Pin1, Pin2, Pin3, Pin4
RS485 (option)	ON: Pin1, Pin2, Pin3, Pin4

Note: Must keep the setting with BIOS setting.

11. COM1:

(Type DB9),Rear serial port, standard DB9 Male serial port is provided to make a direct connection to serial devices. COM1 port is controlled by pins No.1~6 of JP1, select output Signal RI or 5V or 12V, For details, please refer to description of JP1 and S_232 and S_422 setting.



RS232 (Default):	
Pin#	Signal Name
1	DCD# (Data Carrier Detect)
2	RXD (Received Data)
3	TXD (Transmit Data)
4	DTR (Data Terminal Ready)
5	Ground
6	DSR (Data Set Ready)
7	RTS (Request To Send)
8	CTS (Clear To Send)
9	JP1 select Setting (RI/5V/12V)

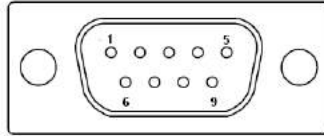
BIOS Setup :
Advanced/W83627UHG Super IO Configuration/Serial
Port 1 Configuration 【RS-232】

RS422 (option):	
Pin#	Signal Name
1	422_RX+
2	422_RX-
3	422_TX-
4	422_TX+
5	Ground
6	NC
7	NC
8	NC
9	NC
BIOS Setup : Advanced/W83627UHG Super IO Configuration/Serial Port 1 Configuration 【RS-422】	

RS485 (option):	
Pin#	Signal Name
1	NC
2	NC
3	485-
4	485+
5	Ground
6	NC
7	NC
8	NC
9	NC
BIOS Setup : Advanced/W83627UHG Super IO Configuration/Serial Port 1 Configuration 【RS-485】	

13. COM2:

(Type DB9), Rear serial port, standard DB9 Male serial port is provided to make a direct connection to serial devices.



Pin#	Signal Name
1	DCD# (Data Carrier Detect)
2	RXD (Received Data)
3	TXD (Transmit Data)
4	DTR (Data Terminal Ready)
5	Ground
6	DSR (Data Set Ready)
7	RTS (Request To Send)
8	CTS (Clear To Send)
9	NA

16. LED3:

LED STATUS. Green LED for Touch Power status.

19 SATA1:

(SATA 7Pin+15Pin), SATA Connectors, one SATA connectors are provided, with transfer speed up to 3.0Gb/s.

20 SD1:

(SD card socket),Secure Digital Memory Card socket.

23. LINE OUT:

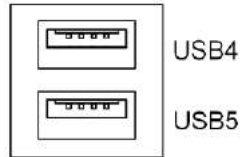
(Diameter 3.5mm Jack), HD Audio port, An onboard Realtek ALC662 codec is used to provide high quality audio I/O ports. Line Out can be connected to a headphone or amplifier.



Line out

24. USB45:

USB4/USB5 : (Double stack USB type A), Rear USB connector, it provides up to 4 USB2.0 ports, High-speed USB 2.0 allows data transfers up to 480 Mb/s ,support USB full-speed and low-speed signaling.

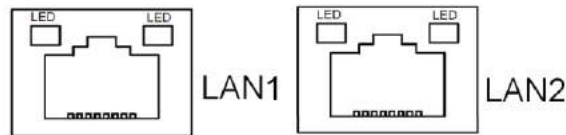


Each USB Type A Receptacle (2 Ports) Current limited value is 1.5A.

If the external USB device current exceeds 1.5A, please separate connectors into different Receptacle.

25. LAN1/LAN2:

LAN1/LAN2: (RJ45 Connector), Rear LAN port, Two standard 10/100/1000M RJ-45 Ethernet ports are provided. Used Realtek RTL8111E chipset, LINK LED (green) and ACTIVE LED (yellow) respectively located at the left-hand and right-hand side of the Ethernet port indicate the activity and transmission state of LAN.



26. BUZ1:

Onboard buzzer.

27 LED1:

LED STATUS. Green LED for Motherboard Power status.

28. LED2:

LED STATUS. Green LED for Motherboard Standby Power Good status.

31. CN3:

(1.27mm Pitch 2X30 Pin Header), For expand output connector, It provides four GPIO, Two USB 2.0, one PS/2 mouse, one PS/2 keyboard, two uart, one PCIe x1, one SMBus.

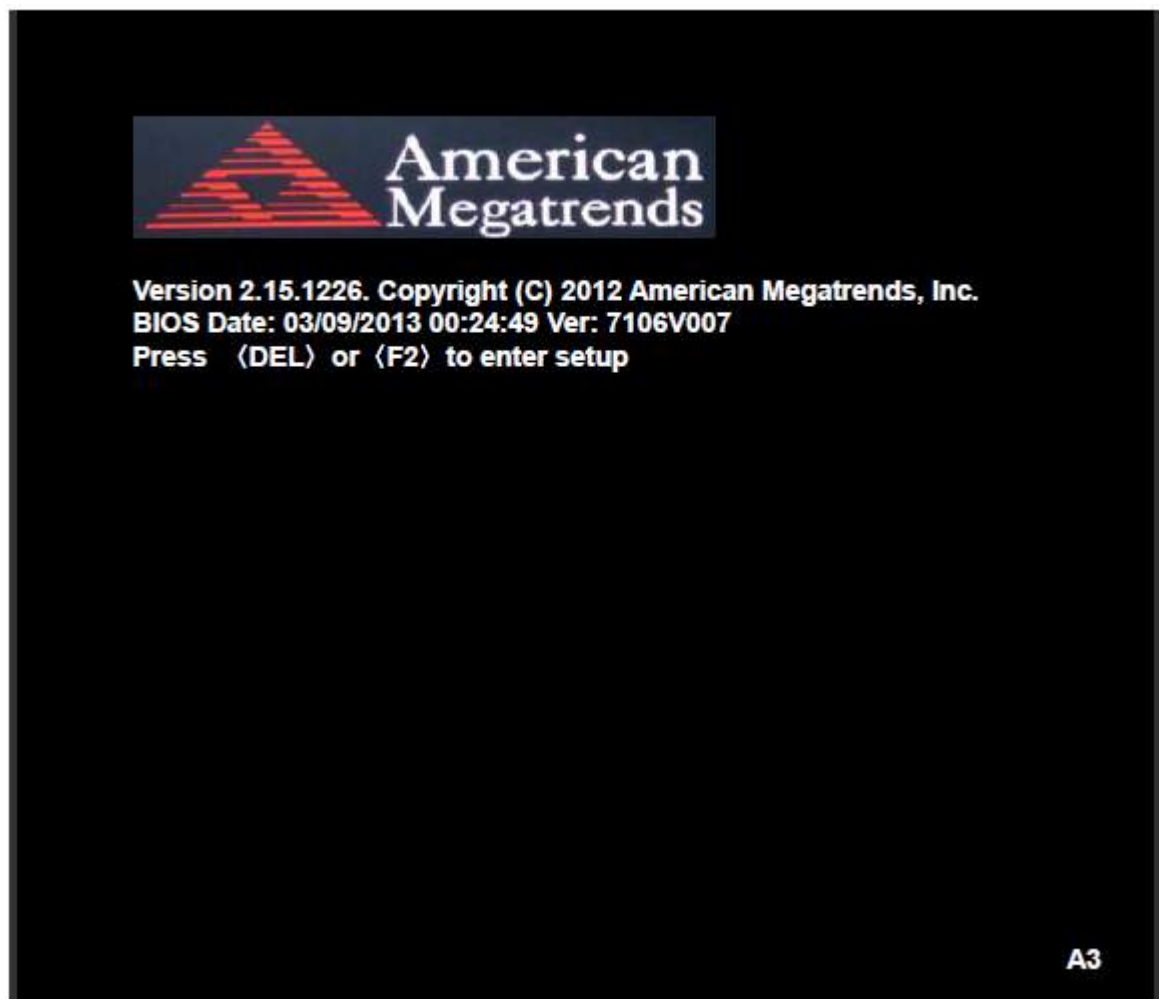
Function	Signal Name	Pin#	Pin#	Signal Name	Function
	5V_S5_USB	1	2	5V_S5_USB	
	5V_S5_USB	3	4	5V_S5_USB	
	USB23_OC	5	6	CLKREQPSON_ATX-	
USB2	USB2_N	7	8	USB2_P	USB2
USB3	USB3_N	9	10	USB3_P	USB3

	Ground	11	12	Ground	
PS/2 MS	PS2_MSCLK	13	14	PS2_MSDATA	PS/2 MS
PS/2 KB	PS2_KBCLK	15	16	PS2_KBDATA	PS/2 KB
COM6 (UART)	COM6_RI	17	18	COM6_DCD-	COM6 (UART)
	COM6_TXD	19	20	COM6_RXD	
	COM6_DTR	21	22	RICOM6_RTS-	
	COM6_DSR	23	24	COM6_CTS-	
	Ground	25	26	Ground	
COM5 (UART)	COM5_RI	27	28	COM5_DCD-	COM5 (UART)
	COM5_TXD	29	30	COM5_RXD	
	COM5_DTR	31	32	DSRCOM5_RTS-	
	COM5_DSR	33	34	DTRCOM5_CTS-	
GPIO24	ICH_GPIO24	35	36	ICH_GPIO13	GPIO13
GPIO26	ICH_GPIO26	37	38	ICH_GPIO27	GPIO27
	Ground	39	40	Ground	
PCIE	PE1_TX_N0	41	42	PE1_TX_P0	PCIE
	PE1_RX_N0	43	44	PE1_RX_P0	
	Ground	45	46	Ground	
	CLK_100M_PE1_N	47	48	CLK_100M_PE1_P	
	PM_PCIE_WAKE	49	50	PLTRST_BUF-	
SMBUS	SMB_CLK_S5	51	52	SMB_DATA_S5	SMBUS
PCIE	PE1_CLKREQ	53	54	Ground	PCIE
	3P3V_S5	55	56	3P3V_S5	
	3P3V_S5	57	58	3P3V_S5	
12V	12V_S0	59	60	12V_S0	12V

Chapter 3 BIOS Setup Description

3.1 Operations after POST Screen

After CMOS discharge or BIOS flashing operation,.Press [**Delete**] key to enter CMOS Setup.



After optimizing and exiting CMOS Setup, the POST screen displayed for the first time is as follows and includes basic information on BIOS, CPU, memory, and storage devices.

3.2 BIOS Setup Utility

Press **[Delete]** key to enter BIOS Setup utility during POST, and then a main menu containing system summary information will appear.

Aptio Setup Utility – Copyright (C) 2012 American Megatrends, Inc.					
Main	Advanced	Chipset	Boot	Security	Save & Exit
BIOS Information					Intel Reference Code Version
BIOS Vendor	American Megatrends				
Core Version	4.6.5.3				
Compliance	UEFI 2.3; PI 1.2				
Project Version	7106V007				
Build Date and Time	03/09/2013 00:24:49				
▶ Intel RC Version					
System Language	[English]				→←: Select Screen
System Date	[Sun 01/01/2012]				↑↓ : Select Item
System Time	[00:00:08]				Enter: Select
Access Level	Administrator				+/- : Change Opt.
					F1 : General Help
					F2: Previous Values
					F3:Optimized Defaults
					F4:Save and Exit
					ESC Exit
Version 2.15.1226. Copyright (C) 2012 American Megatrends , Inc.					

3.3 Main Settings

BIOS Information		Intel Reference Code Version
BIOS Vendor	American Megatrends	
Core Version	4.6.5.3	
Compliance	UEFI 2.3; PI 1.2	
Project Version	7106V007	
Build Date and Time	03/09/2013 00:24:49	
▶ Intel RC Version		
System Language	[English]	→←: Select Screen ↑↓ : Select Item Enter: Select +/- : Charge Opt. F1 : General Help F2: Previous Values F3:Optimized Defaults F4:Save and Exit ESC Exit
System Date	[Sun 01/01/2012]	
System Time	[00:00:08]	
Access Level	Administrator	
Version 2.15.1226. Copyright (C) 2012 American Megatrends , Inc.		

System Time:

Set the system time, the time format is:

Hour : 0 to 23

Minute : 0 to 59

Second : 0 to 59

System Date:

Set the system date, the date format is:

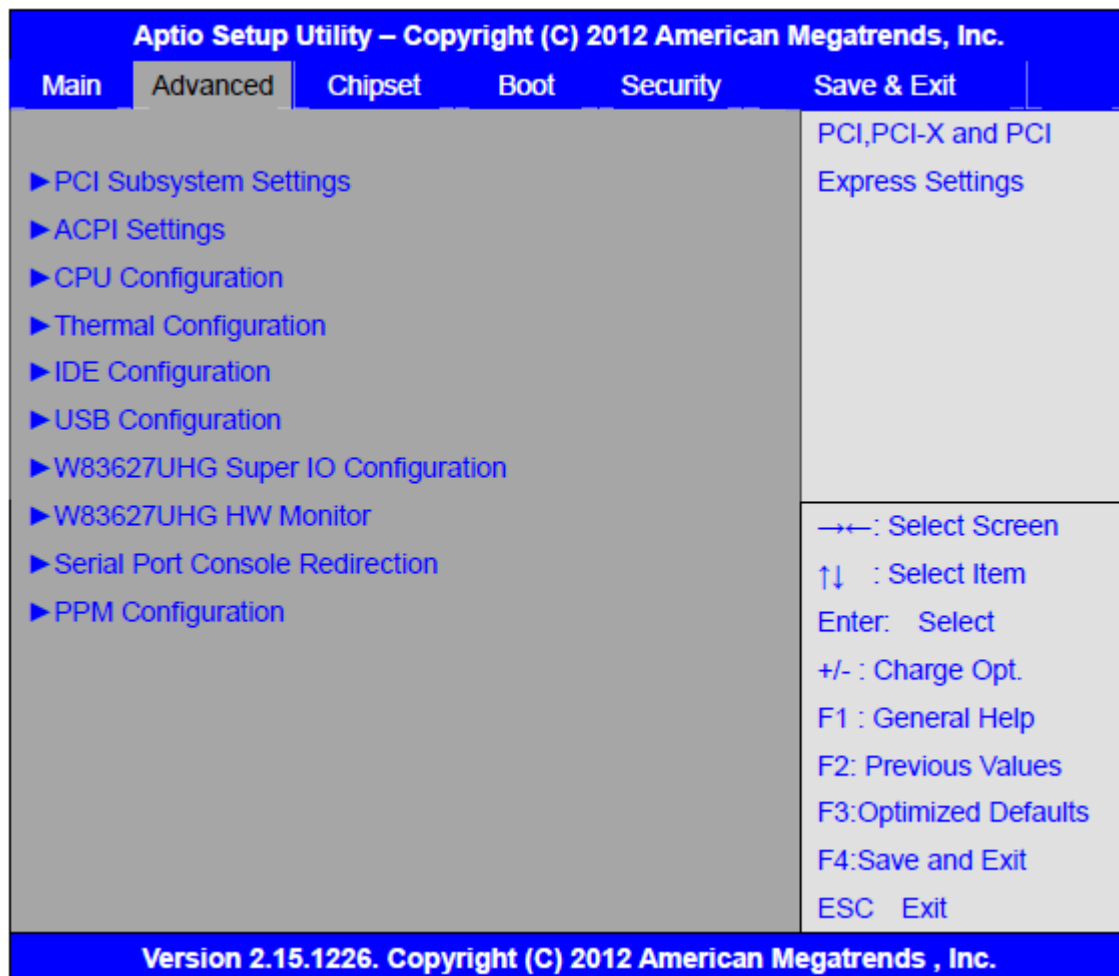
Day: Note that the 'Day' automatically changes when you set the date.

Month: 01 to 12

Date: 01 to 31

Year: 1998 to 2099

3.4 Advanced Settings



3.4.1 PCI Subsystem Settings

PCI Bus Driver Versio V2.05.02

PCI Common Settings:

PCI Latency Timer:

[32 PCI Bus Clocks]

[64 PCI Bus Clocks]

[96 PCI Bus Clocks]

[128 PCI Bus Clocks]

[160 PCI Bus Clocks]

[192 PCI Bus Clocks]

[224 PCI Bus Clocks]

[248 PCI Bus Clocks]

VGA Palette Snoop:

PERR# Generation:
[Disabled]
[Enabled]

[Disabled]
[Enabled]

SERR# Generation:
[Disabled]
[Enabled]

3.4.2 ACPI Settings

Enable ACPI Auto Conf:
[Disabled]
[Enabled]

Enable Hibernation:
[Enabled]
[Disabled]

ACPI Sleep State:
[Both S1 and S3 available for OS
to choose from]
[Suspend Disabled]
[S1 only(CPU Stop Clock)]
[S3 only (Suspend to RAM)]

Lock Legacy Resources:
[Disabled]
[Enabled]

S3 Video Repost:
[Disabled]
[Enabled]

3.4.3 CPU Configuration

Processor Type	Intel(R) Atom(TM) CPU N2600
EMT64	Not Supported

Processor Speed	1600 MHz
System Bus Speed	400 MHz
Ratio Status	16
Actual Ratio	16
System Bus Speed	400 MHz
Processor Stepping	30661
Microcode Revision	269
L1 Cache RAM	2 x 56 k
L2 Cache RAM	2 x 512k
Processor Core	Dual
Hyper-Threading	Supported

Hyper-Threading:

[Enabled]
[Disabled]

Execute Disable Bit:

[Enabled]
[Disabled]

Limit CPUID Maximum:

[Disabled]
[Enabled]

3.4.4 Thermal Configuration

CPU Thermal Configuration

DTS SMM

[Disabled]
[Enabled]

Platform Thermal Configuration

Critical Trip Point [POR]

Active Trip Point Lo [55 C]

Active Trip Point Hi [71C]

Passive Trip Point [95]

Passive TC1 Value 1

Passive TC2 Value 5

Passive TSP Value 10

3.4.5 IDE Configuration

SATA Port0	Not Present
SATA Port1	Not Present

SATA Controller(S):

[Enabled]
[Disabled]

Configure SATA as:

[IDE]
[AHCI]

Misc Configuration for hard disk

3.4.6 USB Configuration

USB Configuration

USB Devices:

1 Drive , 1 keyboard

Legacy USB Support:

[Enabled]
[Disabled]

EHCI Hand-off:

[Disabled]
[Enabled]

USB hardware delays a

USB transfer time-out:

[20 sec]
[10 sec]
[5 sec]
[1 sec]

Device reset time-out:

[20 sec]
[10 sec]
[30 sec]
[40 sec]

Device power-up delay

[Auto]
[Manual]

Mass Storage Devices :

Multiplecard Reader 1

[Auto]
[Floppy]
[Forced FDD]
[Hard Disk]
[CD-ROM]

3.4.7 W83627UHG Super IO Configuration

W83627UHG Super IO ch W83627UHG

Serial Port 1 Configuration

UART Mode Selection :

[RS-232]
[RS-485]
[RS-422]

Serial Port 2 Configuration

Serial Port 3 Configuration

UART Mode Selection :

[RS-485]
[RS-422]

Serial Port 4 Configuration

Serial Port 5 Configuration

Serial Port 6 Configuration

Power Failure

[Keep last state]
[Always off]
[Always on]

3.4.8 W83627UHG HW Monitor

PC Health Status

System Temperature1	: +38
System Speed	: N/A
VCORE	: +0.968V
+12V	: +12.302V
+3.3V	: +3.320V

+1.5V	: +1.528V
AVCC	: +5.203V
VCC5V	: +5.216V
VSBS	: +5.203V
VBAT	: +3.334V

3.4.9 Serial Port Console Redirection

COM0

Console Redirection

[Enabled]

[Disabled]

Console Redirection Settings

Serial Port for Out-of-Band Management/

Windows Emergency Management Services (EMS)

Console Redirection

[Disabled]

[Enabled]

Console Redirection Settings

3.4.10 PPM Configuration

PPM Configuration

EIST:

[Enabled]

[Disabled]

CPU C state Report

[Enabled]

[Disabled]

Enhanced C state

[Enabled]

[Disabled]

CPU Hard C4E

[Enabled]

[Disabled]

CPU C6 state

[Enabled]

[Disabled]

C4 Exit Timing

	[Fast]
	[Default]
	[Slow]
C-state POPDOWN	[Enabled]
	[Disabled]
C-state POPUP	[Enabled]
	[Disabled]

3.5 Chipset Settings



3.5.1 Host Bridge

- ▶ Memory Frequency and Timing
- ▶ Intel IGD Configuration

***** Memory Information *****

Memory Frequency	800 MHz(DDR3)
Total Memory	2048 MB
DIMM#0	Not Present
DIMM#1	2048 MB

Memory Frequency and Timing

MRC Fast Boot

[Enabled]

[Disabled]

Max TOLUD

[Dynamic]

[1GB]

[1.25GB]

[1.5GB]

[1.75GB]

[2GB]

[2.25GB]

[2.5GB]

[2.75GB]

[3GB]

[3.25GB]

Intel IGD Configuration

IGFX – Boot Type

[VBIOS Default]

[VGA]

[LVDS]

[VGA + LVDS]

LCD Panel Type

[VBIOS Default]

[640x480, 18bit]

[800x480, 18bit]

[800x600, 18bit]

[1024x600, 18bit]

[1024x768, 18bit]

[1280x768, 18bit]

[1280x800, 18bit]

	[1280x1024, 18bit] [1366x768, 18bit] [1024x768, 24bit] [1280x768, 24bit] [1280x800, 24bit] [1280x1024, 24bit]
Panel Scaling	[Auto] [Force Scaling] [off] [Maintain Aspect Ratio]
Active LFP	[LVDS] [No LVDS] [EDP]
IGD Clock Source	[External Clock] [Internal Clock]
Fixed Graphics Memory	[128MB] [256MB]
ALS Support	[Disabled] [Enabled]
Back light Control	[DC] [PWM]
Back light Logic	[Positive] [Negative]

Back light Control Lev

[Auto]
[Disabled]
[Level 8]
[Level 1]
[Level 2]
[Level 3]
[Level 4]
[Level 5]
[Level 6]
[Level 7]
[Level 8]
[Level 9]
[Level 10]
[Level 11]
[Level 12]
[Level 13]
[Level 14]
[Level 15]

3.5.2 South Bridge

TPT Devices

PCI Express Root Port 0

PCI Express Root Port 1

PCI Express Root Port 2

PCI Express Root Port 3

DMI Link ASPM Control

[Enabled]
[Disabled]

PCI-Exp. High Priorit

[Disabled]
[Enabled]

High Precision Event Timer Configuration

High Precision Timer

[Enabled]

[Disabled]

SLP_S4 Assertion Width

[1-2 Seconds]

[2-3 Seconds]

[3-4 Seconds]

[4-5 Seconds]

Restore AC Power Loss

[Last State]

[Power off]

[Power on]

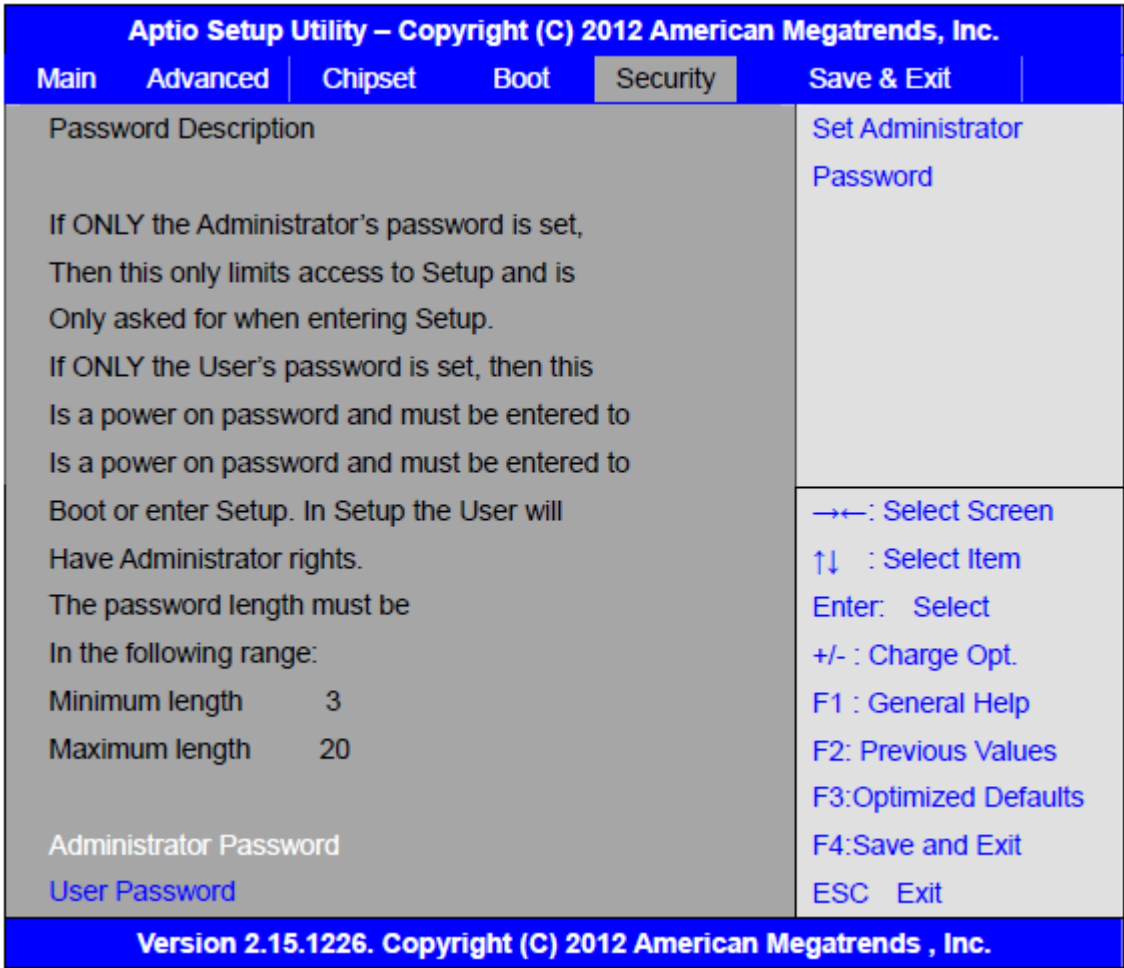
3.6 Boot Settings

Aptio Setup Utility – Copyright (C) 2012 American Megatrends, Inc.					
Main	Advanced	Chipset	Boot	Security	Save & Exit
Boot Configuration				Number of seconds to Wait for setup	
Setup Prompt Timeout		1		Activation key.	
Bootup Numlock State		[On]		65535(0xFFFF)means Indefinite waiting.	
Quiet Boot		[Disabled]			
Fast Boot		[Enabled]			
Skip USB		[Disabled]			
Skip PS2		[Disabled]			
CSM16 Module Version		07.69			
Gatea20 Active		[Upon Request]			
Option ROM Messages		[Force BIOS]			
Interrupt 19 Capture		[Immediate]			
Driver Option Priorities				→←: Select Screen	
Boot Option Priorities				↑↓ : Select Item	
				Enter: Select	
				+/- : Change Opt.	
Boot Option Priorities				F1 : General Help	
Boot Option #1		[SATA PM: Hitachi...]		F2: Previous Values	
Boot Option #2		[...]		F3:Optimized Defaults	
Hard Drive BBS Priorities				F4:Save and Exit	
► CSM Parameters				ESC Exit	
Version 2.15.1226. Copyright (C) 2012 American Megatrends , Inc.					

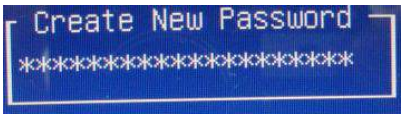
Setup Prompt Timeout	[1]
Bootup Numlock State	[On] [off]
Quiet Boot	[Disabled] [Enabled]
Fast Boot	[Enabled] [Disabled]
Skip VGA	[Enabled] [Disabled]
Skip USB	[Disabled] [Enabled]
Skip PS2	[Disabled] [Enabled]
CSM16 Module Version	07.69
Gatea20 Active	[Upon Request] [Always]
Option ROM Messages	[Force BIOS] [Keep Current]
Interrupt 19 Capture	[Immediate] [Postponed]
Boot Option #1	
Boot Option #2	
.....	

Hard Drive BBS Priorities	Sets the system boot order [SATA PM:*** ...] Boot Option #1 SATA PM:***... ***** Disabled
CSM Parameters	
Launch CSM	[Always] [Never]
Boot option filter	[UEFI and Legacy] [Legacy only] [UEFI only]
Launch PXE OpROM poli	[Do not Launch] [UEFI only] [Legacy only]
Launch Storage OpROM	[Legacy only] [Do not Launch] [UEFI only]
Launch Video OpROM po	[Do not Launch] [UEFI only] [Legacy only]
Other PCI device ROM	[UEFI OpROM] [Legacy OpROM]

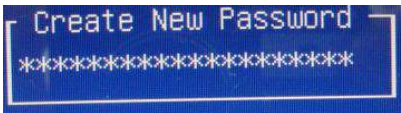
3.7 Security Settings



6.4.1 Administrator Password



6.4.2 User Password



Type the password with up to 20 characters and then press <Enter> key. This will clear all previously typed CMOS passwords. You will be requested to confirm the password. Type the password again and press <Enter> key. You may press <Esc> key to abandon password entry operation.

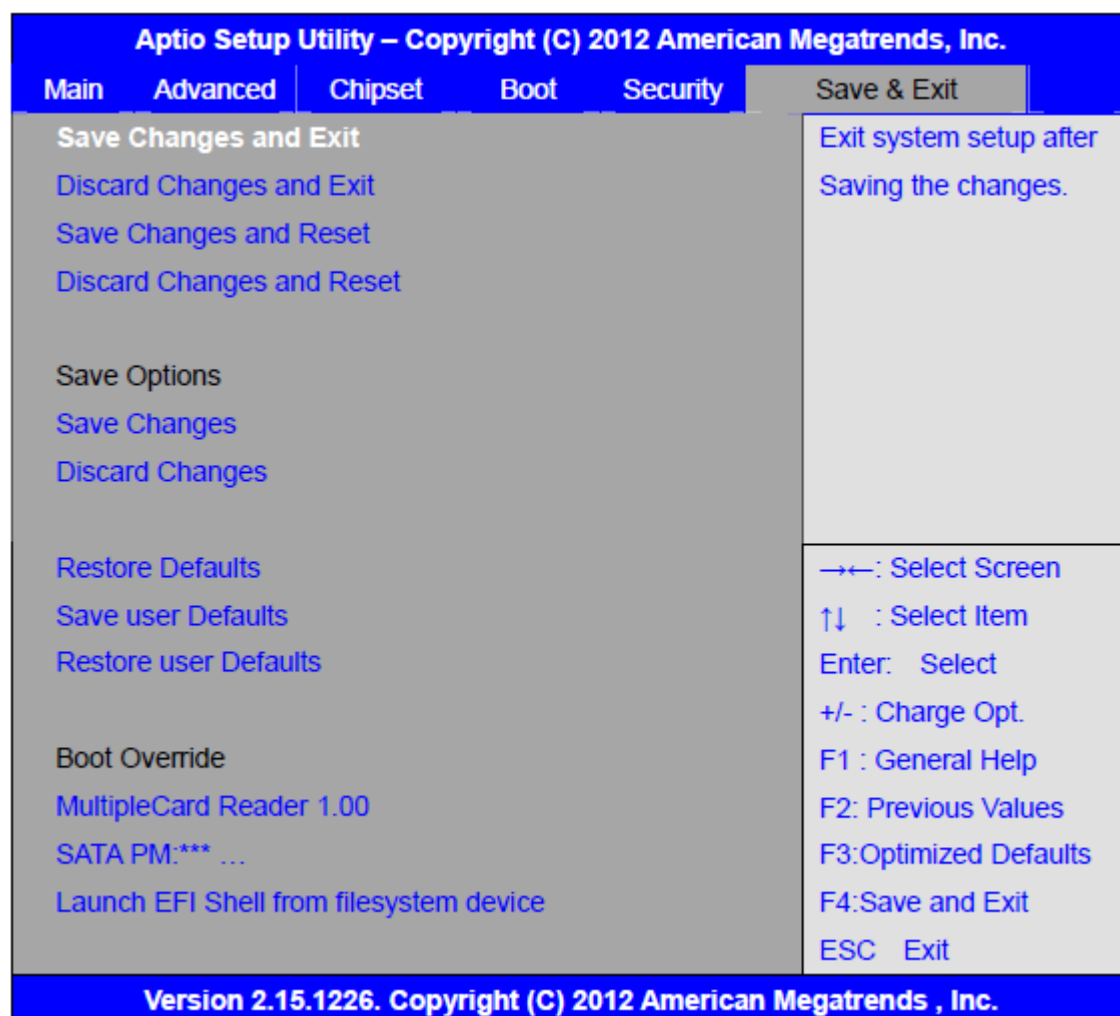
To clear the password, just press <Enter> key when password input window pops up. A confirmation message will be shown on the screen as to whether the password will

be disabled. You will have direct access to BIOS setup without typing any password after system reboot once the password is disabled.

Once the password feature is used, you will be requested to type the password each time you enter BIOS setup. This will prevent unauthorized persons from changing your system configurations.

Also, the feature is capable of requesting users to enter the password prior to system boot to control unauthorized access to your computer. Users may enable the feature in Security Option of Advanced BIOS Features. If Security Option is set to System, you will be requested to enter the password before system boot and when entering BIOS setup; if Security Option is set to Setup, you will be requested for password for entering BIOS setup.

3.8 Save and Exit Settings



Save Changes and Exit

Save & Exit Setup save Configuration and exit ?

	[Yes]
	[No]
Discard Changes and Ext	
Exit Without Saving Quit without saving?	
	[Yes]
	[No]
Save Changes and Reset	
Save & reset Save Configuration and reset?	
	[Yes]
	[No]
Discard Changes and Reset	
Reset Without Saving Reset without saving?	
	[Yes]
	[No]
Save Changes	
Save Setup Values Save configuration?	
	[Yes]
	[No]
Discard Changes	
Load Previous Values Load Previous Values?	
	[Yes]
	[No]
Restore Defaults	
Load Optimized Defaults Load optimized Defaults?	
	[Yes]
	[No]
Save user Defaults	
Save Values as User Defaults Save configuration?	
	[Yes]
	[No]
Restore user Defaults	
Restore User Defaults Restore User Defaults?	
	[Yes]
	[No]
Launch EFI Shell from filesystem device	
WARNING Not Found	
	[ok]

Chapter 4 Installation of Drivers

This chapter describes the installation procedures for software and drivers under the windows 7. The software and drivers are included with the motherboard. The contents include **Intel chipset driver, VGA driver, LAN drivers, Audio driver** Installation instructions are given below.

Important Note:

After installing your Windows operating system (Windows 7), you must install first the Intel Chipset Software Installation Utility before proceeding with the installation of drivers.



4.1 Intel Chipset Driver

To install the Intel chipset driver, please follow the steps below.

Step 1. Select **Intel (R) Chipset NM10 Express** from the list



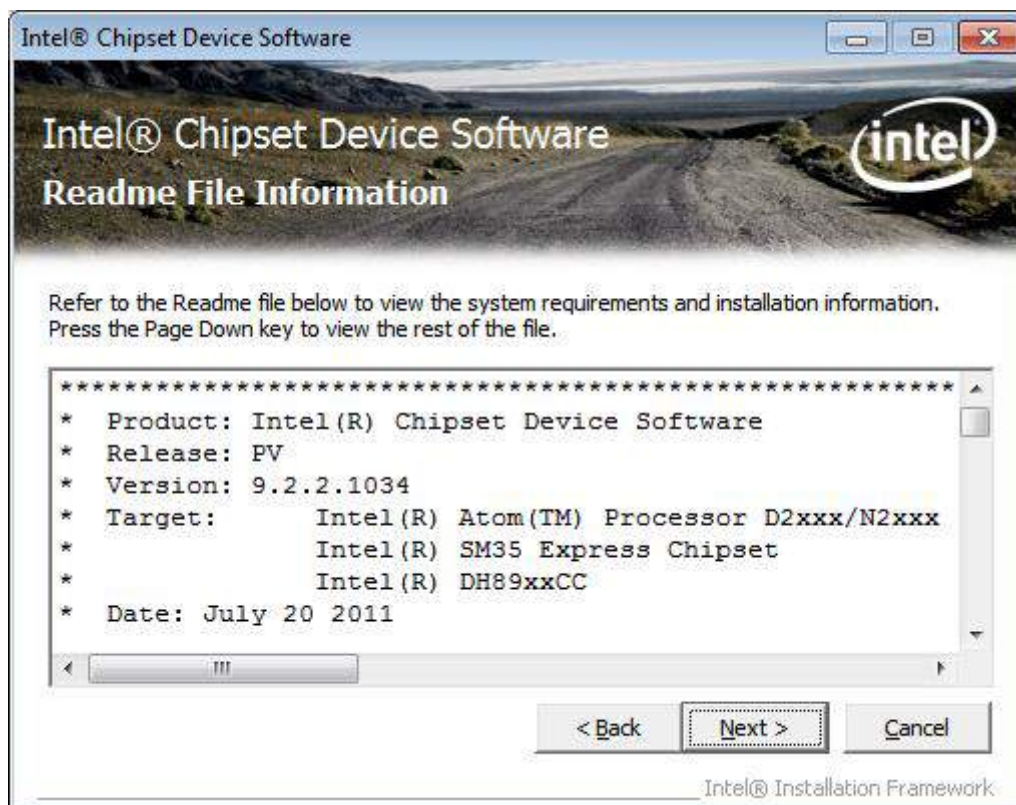
Step 2. Click **Next** to setup program.



Step 3. Read the license agreement. Click **Yes** to accept all of the terms of the license agreement.



Step 4. Click **Next** to continue.



Step 5. Click Next.



Step 6. Select Yes, I want to restart this computer now. Click **Finish**, then remove any installation media from the drives.



4.2 Intel Graphics Media Accelerator Driver

To install the VGA Drivers, follow the steps below to proceed with the installation.

Step 1. Select **Intel(R) VGA Chipset Driver**.



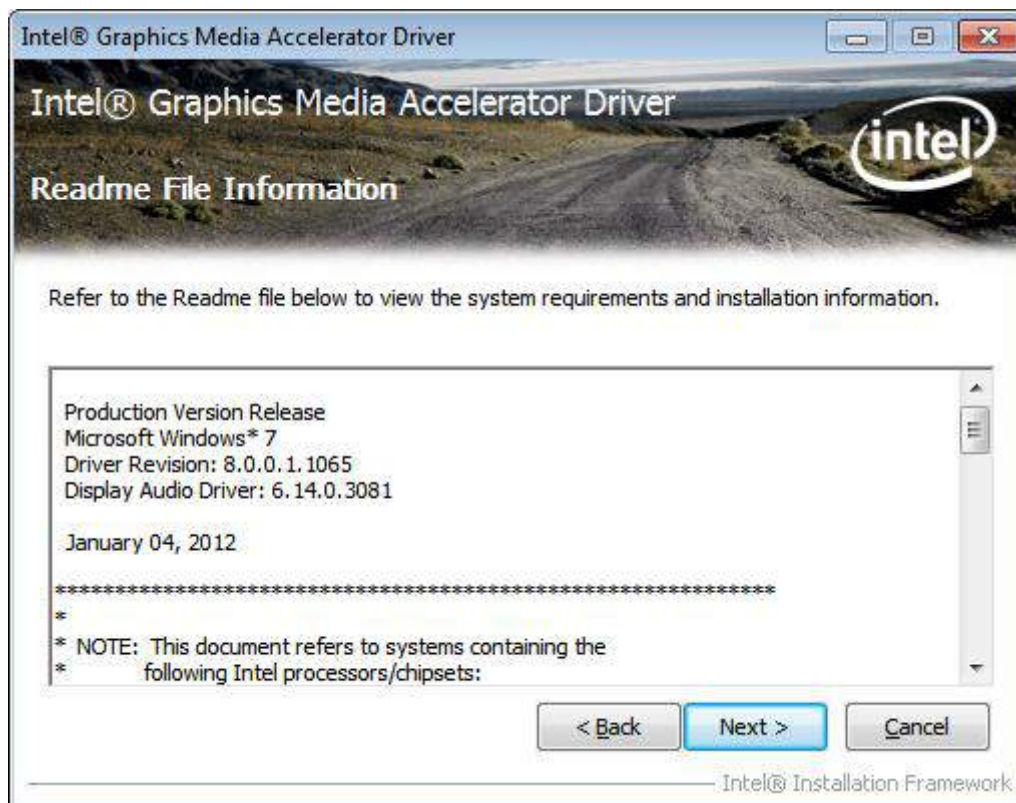
Step 2. Click **Automatically run WinSAT and enable the Windows Aero desktop theme (if supported)**. Click **Next**.



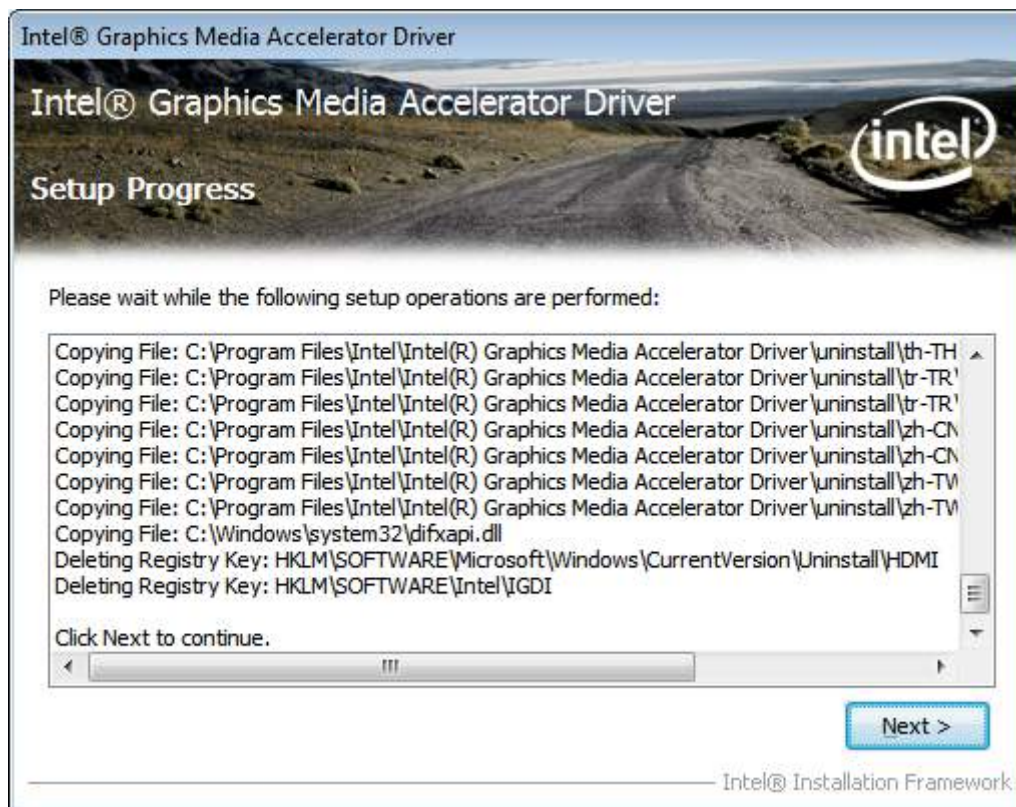
Step 3. Read license agreement, click **Yes**.



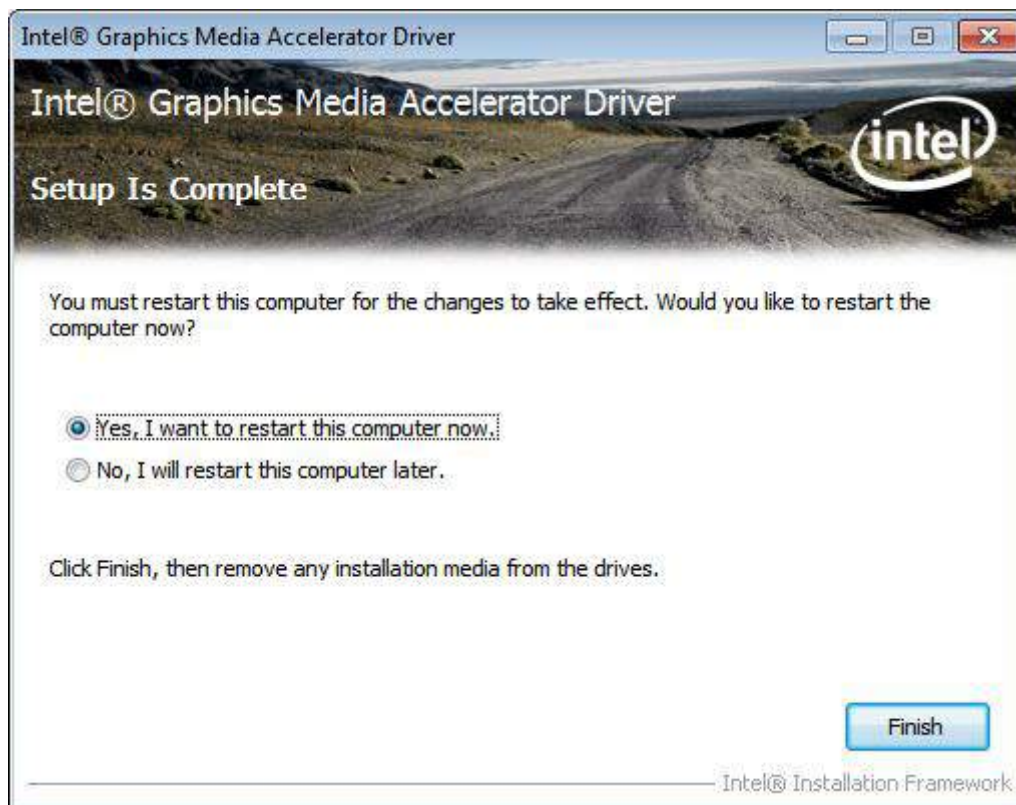
Step 4. Click **Next**.



Step 5. Click **Next** to continue.



Step 6. Select **Yes, I want to restart this computer now.** Click **Finish.**



4.3 Intel (R) Network Adapter

To install the Intel (R) Network Adapter device driver, please follow the steps below.

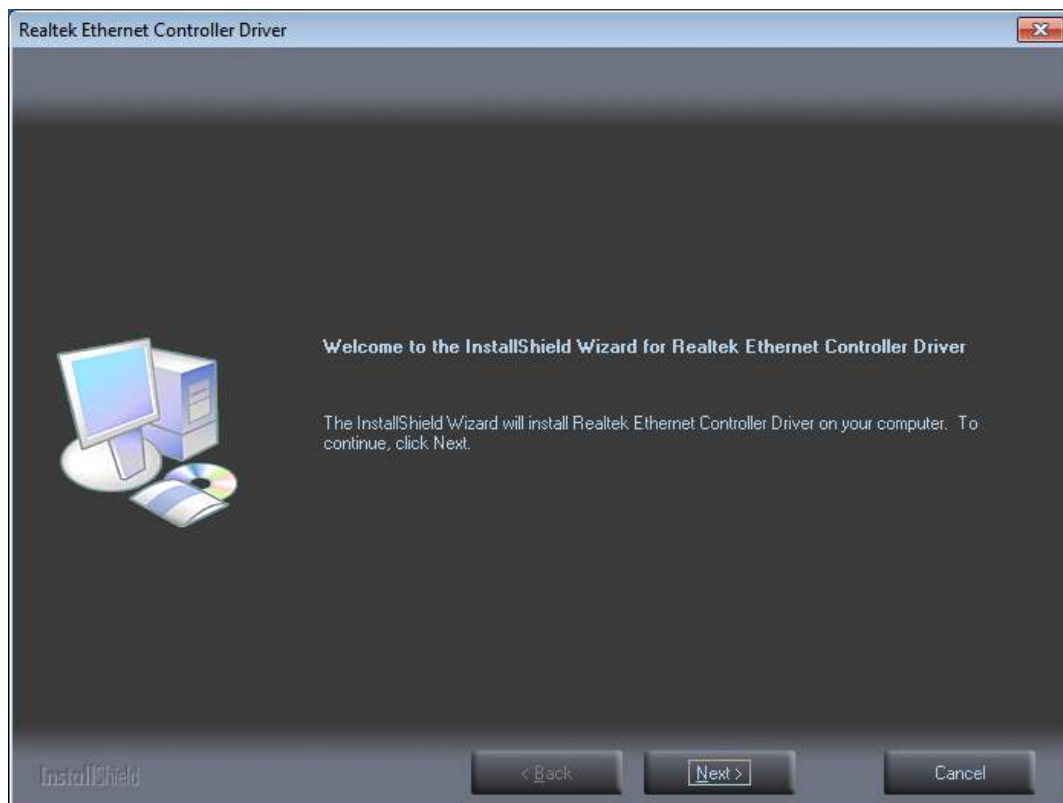
Step 1. Select LAN Driver.



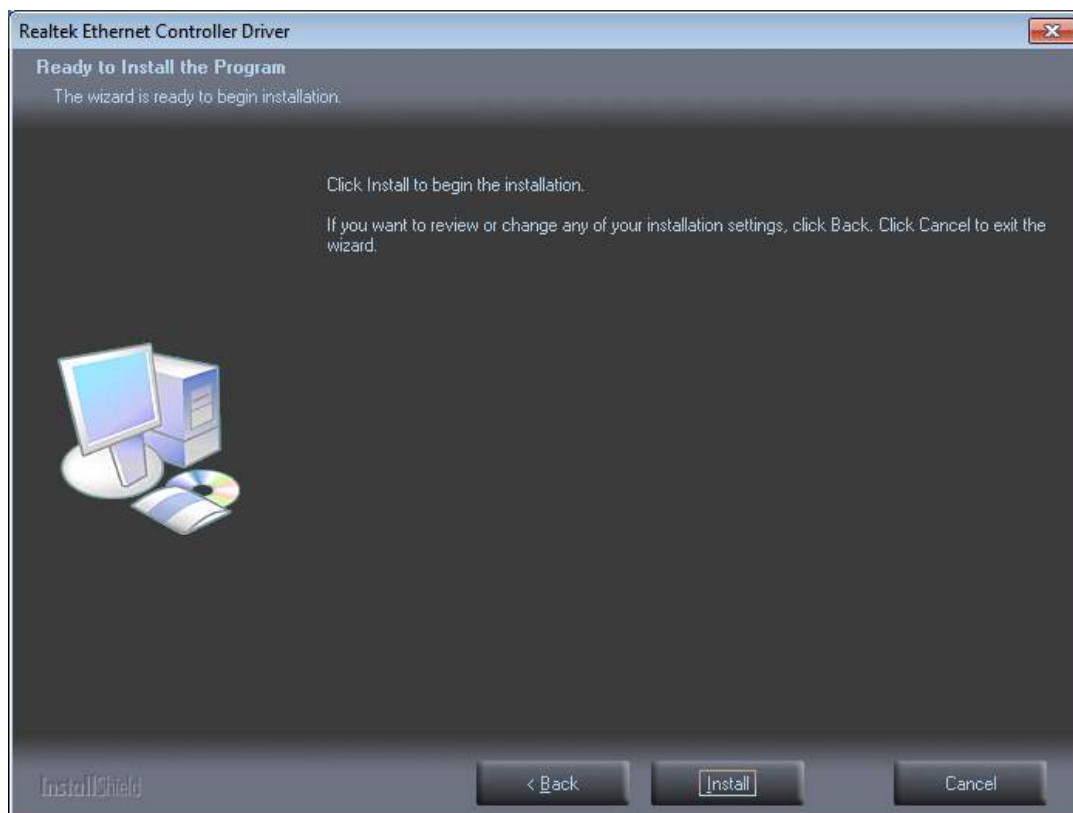
Step 2. Select 12"~15".



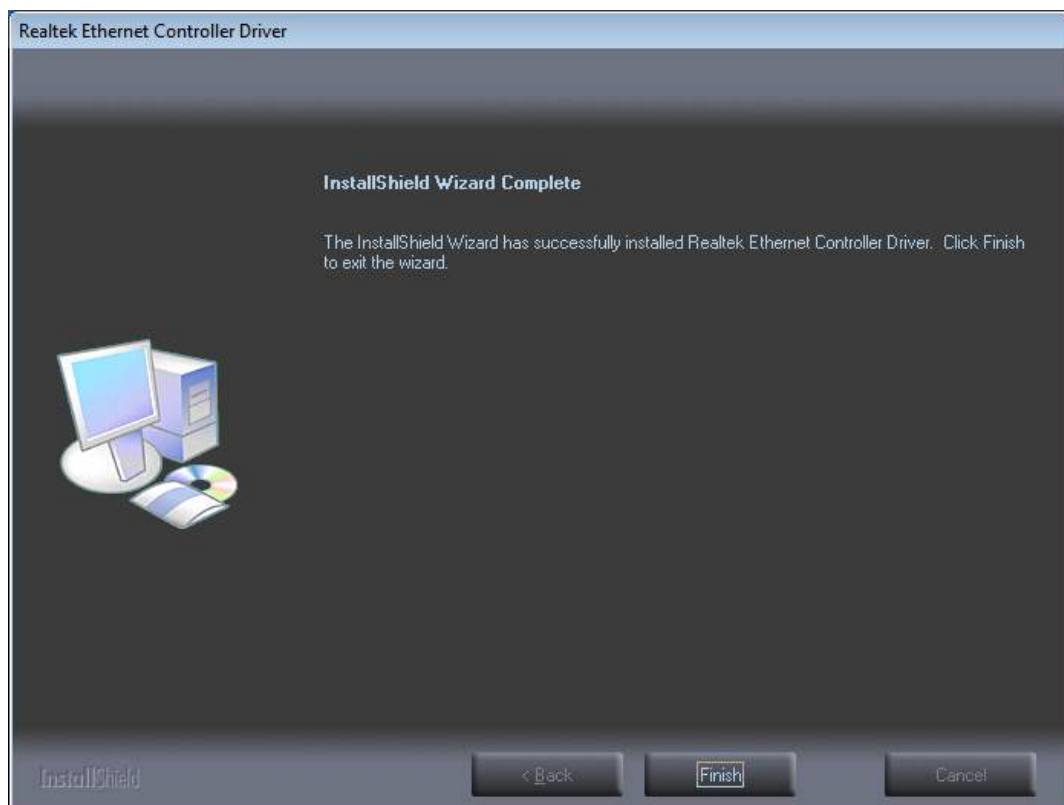
Step 3. Click **Next** to continue.



Step 4. Click **Install** to begin the installation.



Step 5. Click **Finish** to exist the wizard.



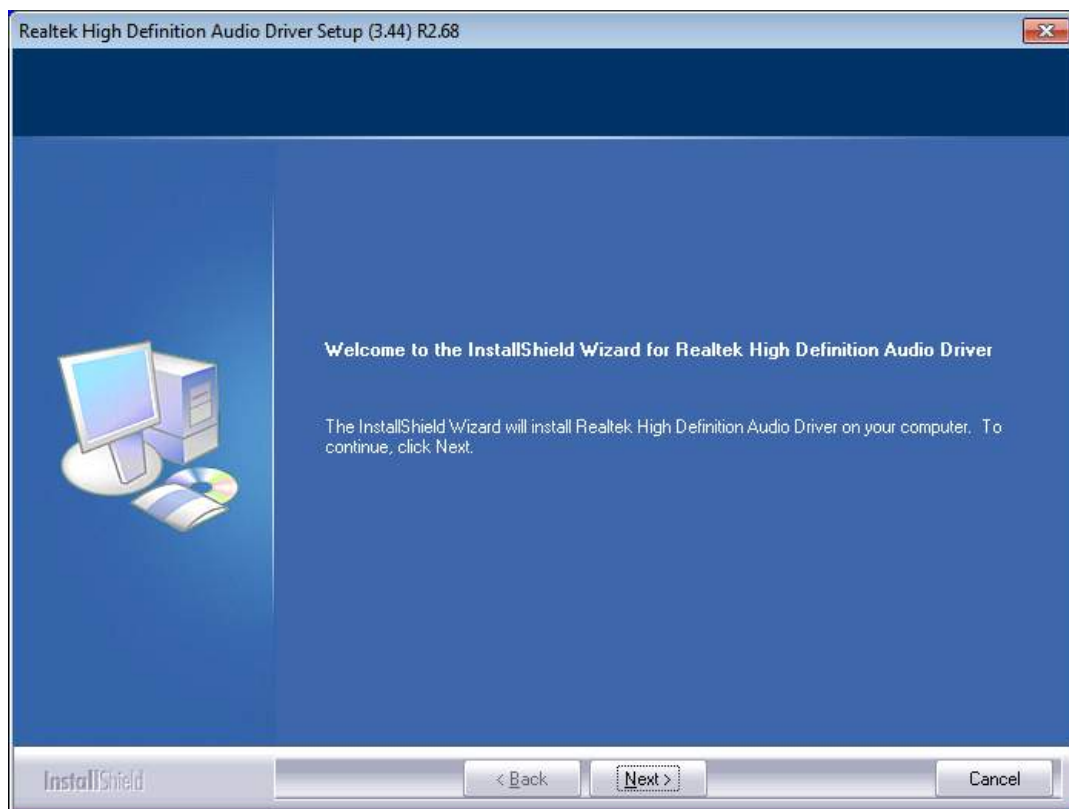
4.4 Realtek ALC662 HD Audio Codec Driver Installation

To install the Realtek ALC662 HD Audio Codec Driver, please follow the steps below.

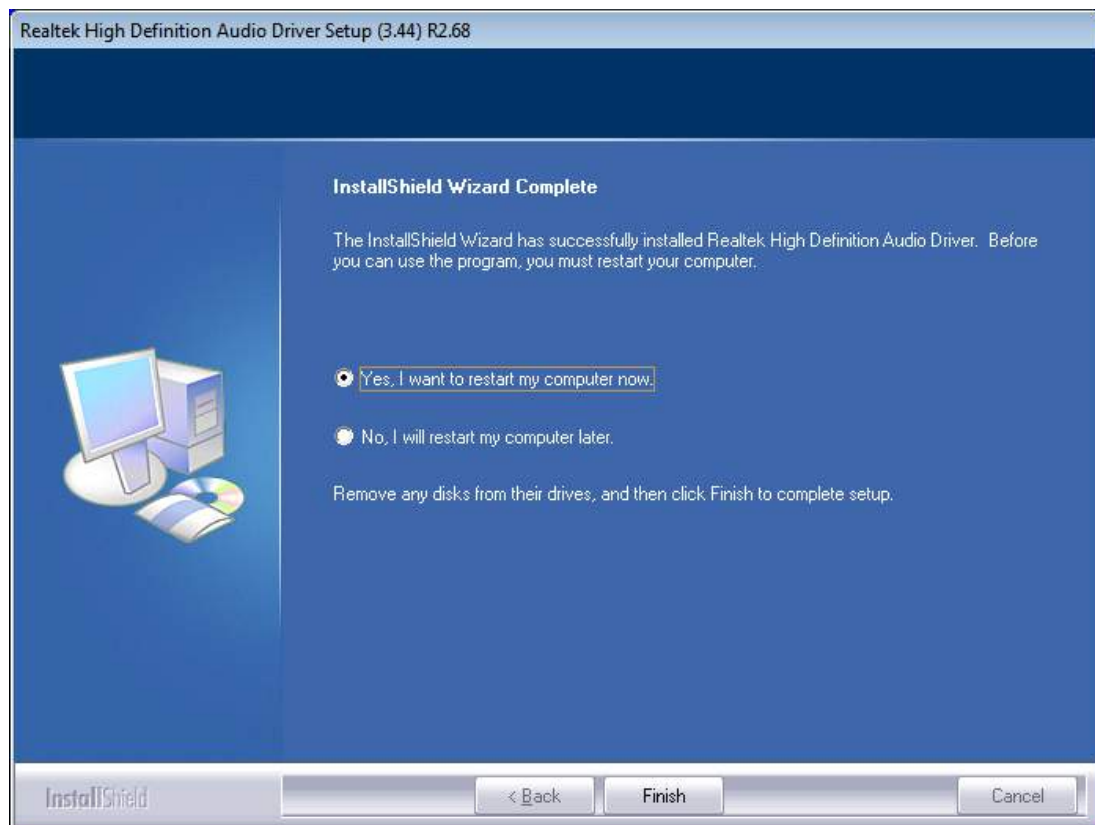
Step 1. Select **Realtek AL662 Audio Codec Driver** from the list



Step 2. Click **Next** to continue.



Step 3. Click **Yes, I want to restart my computer now.** Click **Finish** to complete the installation.



Chapter 5 Touch Screen Installation

This chapter describes how to install drivers and other software that will allow your touch screen work with different operating systems.

5.1 Windows XP/2003/Vista/7 Universal Driver

Installation for PenMount 6000 Series

Before installing the Windows XP/2003/Vista/7 driver software, you must have the Windows XP/2003/Vista/7 system installed and running on your computer. You must also have one of the following PenMount 6000 series controller or control boards installed: PM6500, PM6300.

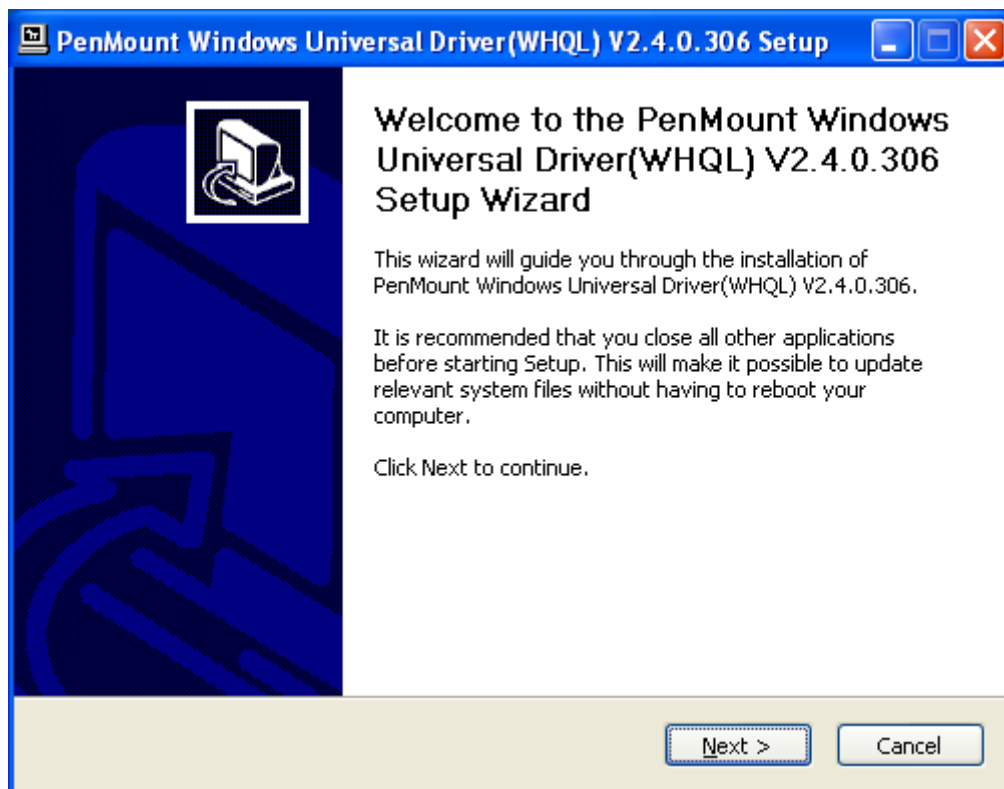
5.1.1 Installing Software

If you have an older version of the PenMount Windows XP/2003/Vista/7 driver installed in your system, please remove it first. Follow the steps below to install the PenMount DMC6000 Windows XP/2003/Vista/7 driver.

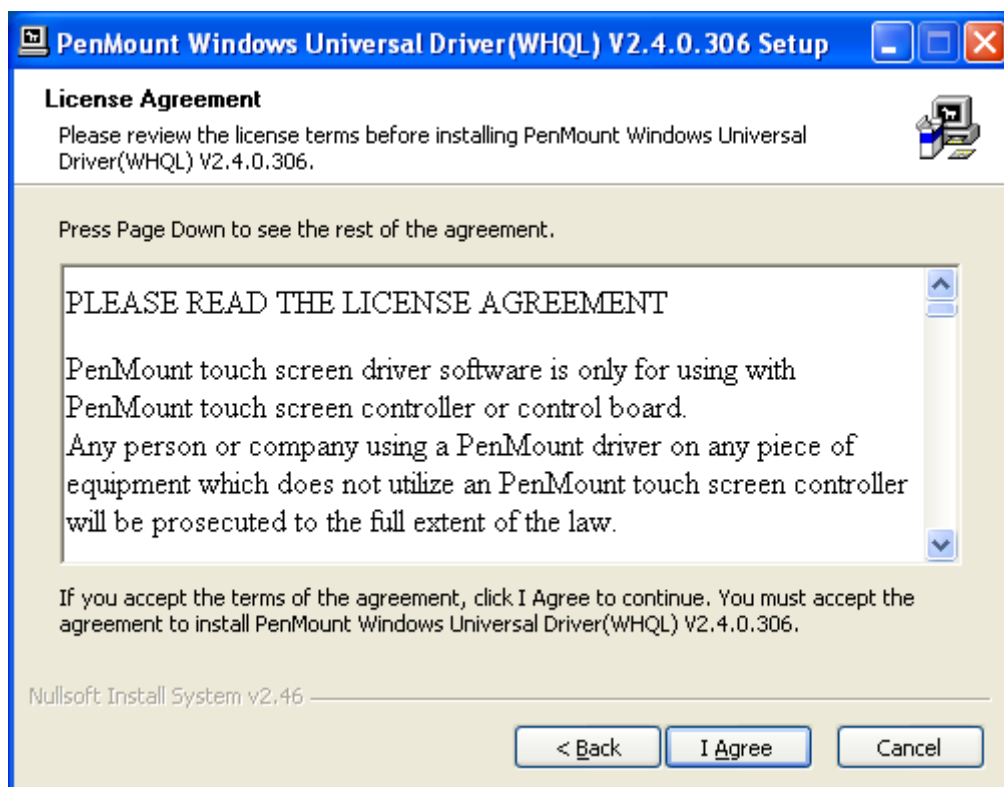
Step 1. Insert the product CD, the screen below would appear. Click touch panel driver.



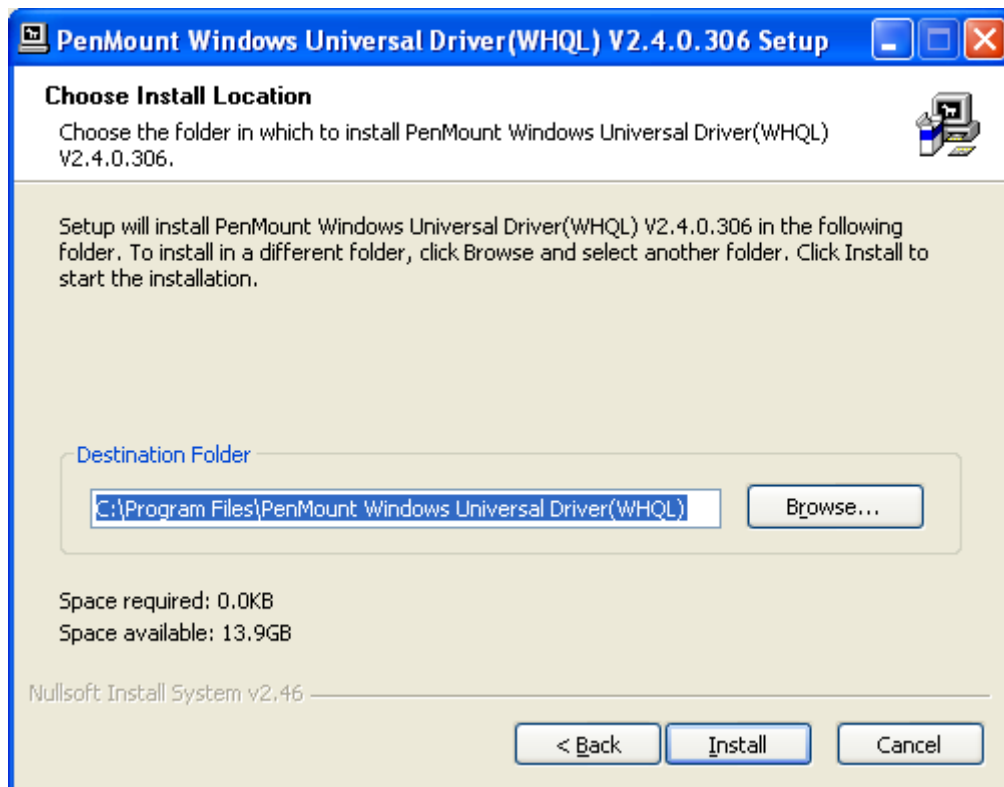
Step 2. Click **Next** to continue.



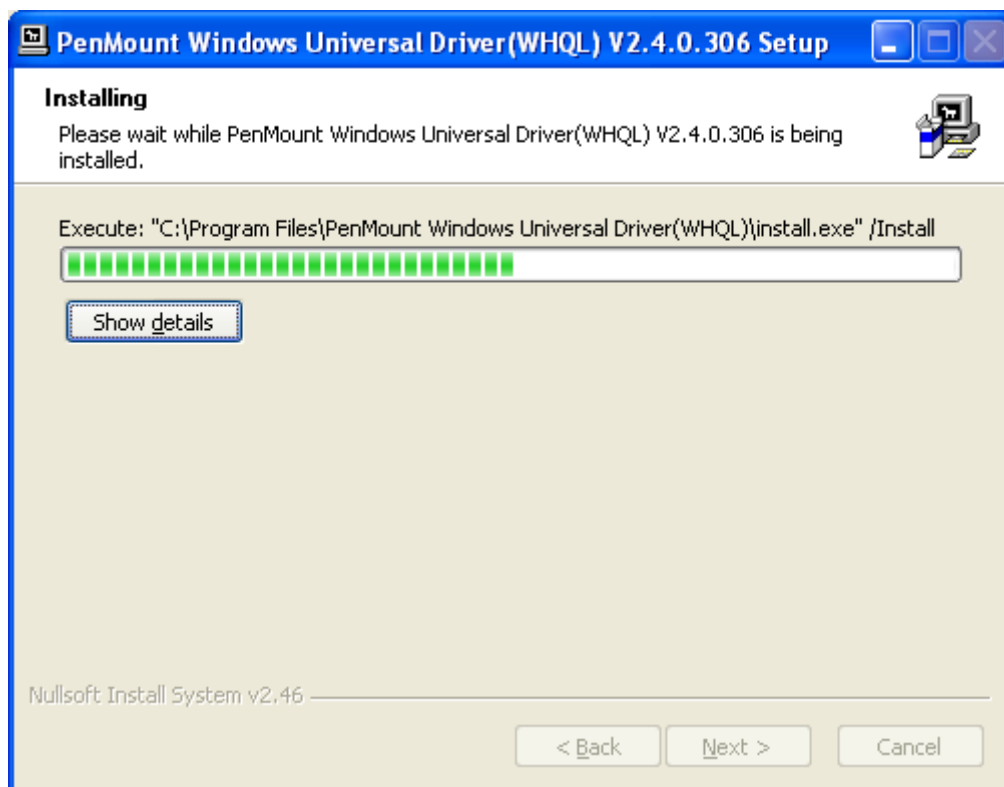
Step 3. Read the license agreement. Click **I Agree** to agree the license agreement.



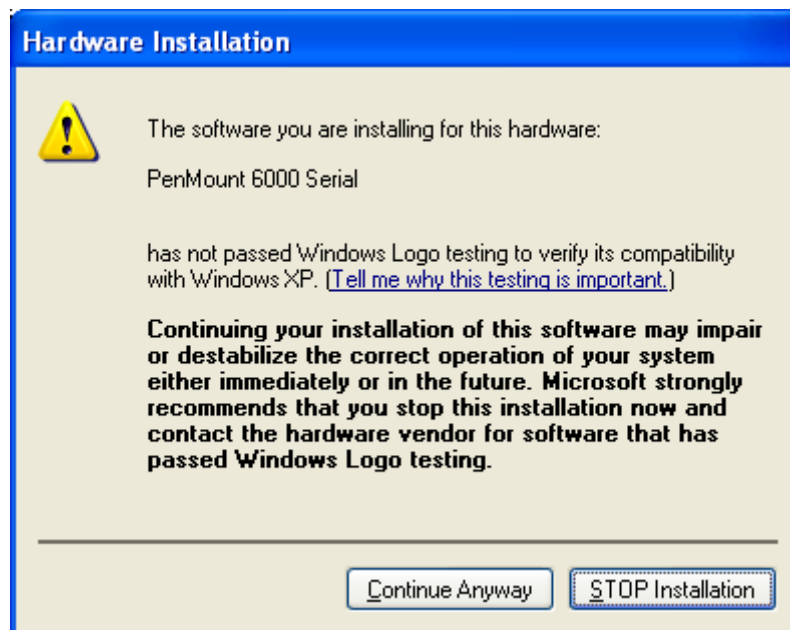
Step 4. Choose the folder in which to install PenMount Windows Universal Driver. Click **Install** to start the installation.



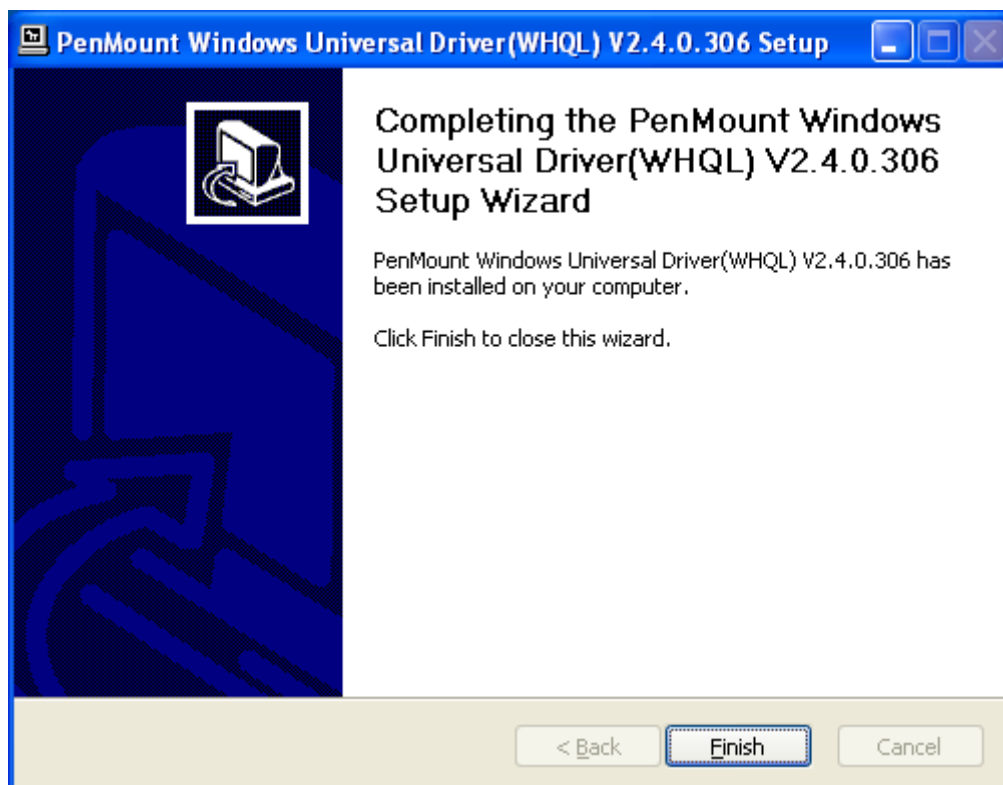
Step 5. Wait for installation. Then click **Next** to continue.



Step 6. Click Continue Anyway.



Step 7. Click Finish to complete installation.



5.2 Software Functions

Upon rebooting, the computer automatically finds the new 6000 controller board. The touch screen is connected but not calibrated. Follow the procedures below to carry out calibration.

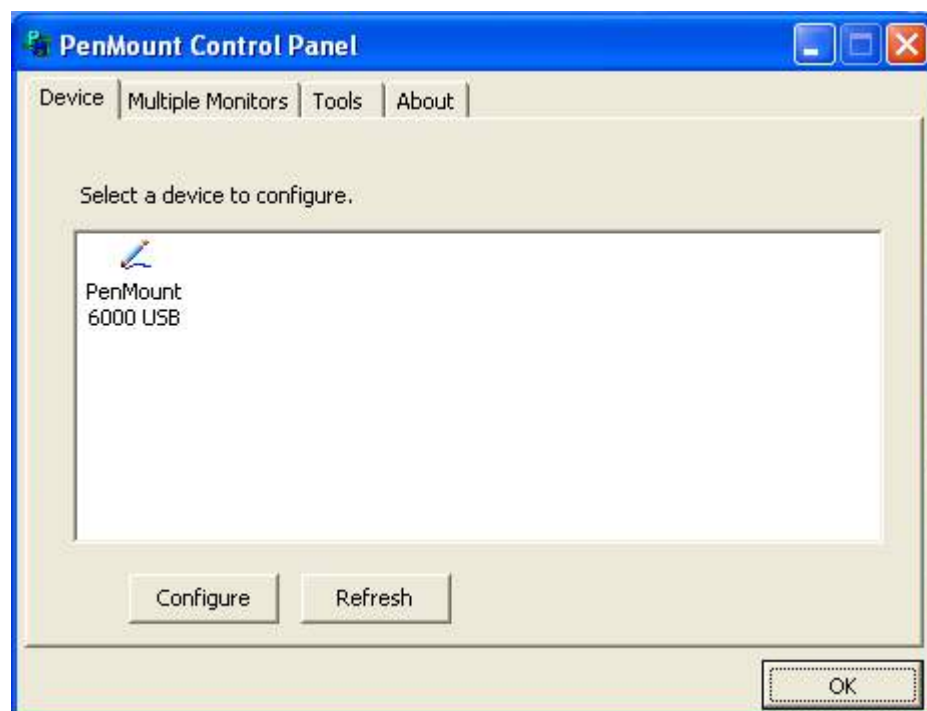
1. After installation, click the PenMount Monitor icon “PM” in the menu bar.
2. When the PenMount Control Panel appears, select a device to “Calibrate.”

PenMount Control Panel

The functions of the PenMount Control Panel are **Device**, **Multiple Monitors**, **Tools** and **About**, which are explained in the following sections.

Device

In this window, you can find out that how many devices be detected on your system.



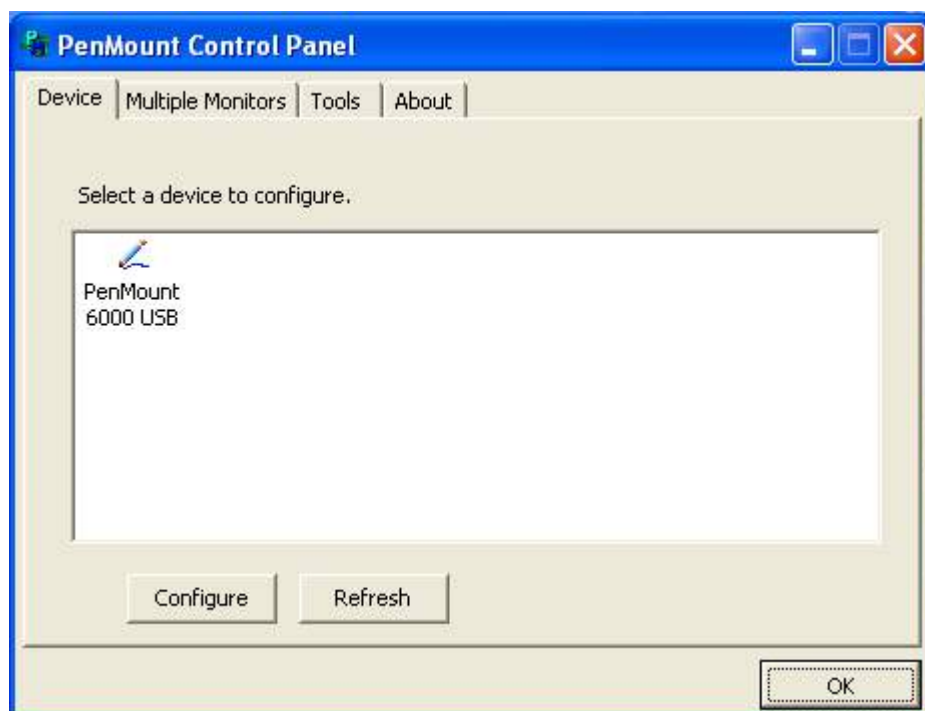
Calibrate

This function offers two ways to calibrate your touch screen. ‘Standard Calibration’ adjusts most touch screens. ‘Advanced Calibration’ adjusts aging touch screens.

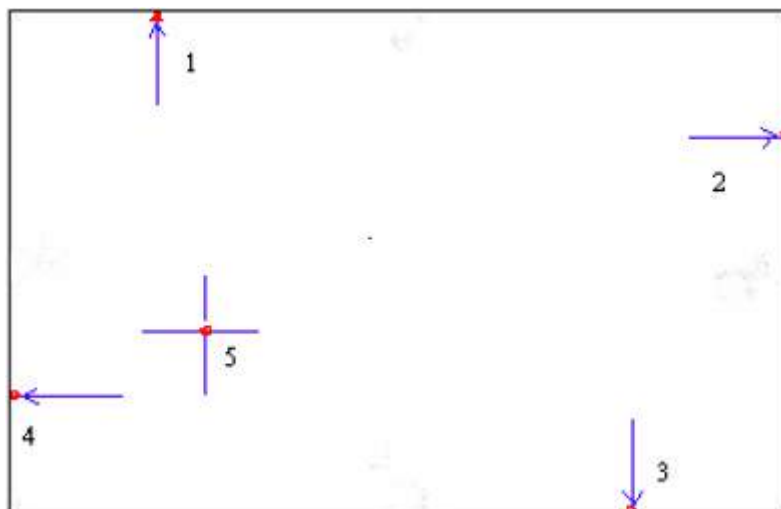
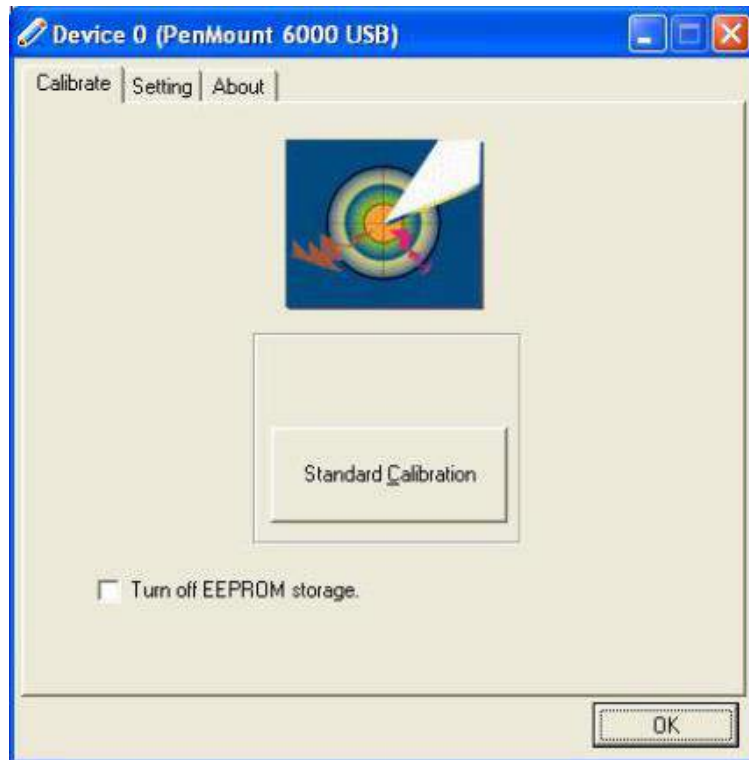
Standard Calibration	Click this button and arrows appear pointing to red squares. Use your finger or stylus to touch the red squares in sequence. After the fifth red point calibration is complete. To skip, press ‘ESC’.
----------------------	--

Advanced Calibration	Advanced Calibration uses 4, 9, 16 or 25 points to effectively calibrate touch panel linearity of aged touch screens. Click this button and touch the red squares in sequence with a stylus. To skip, press ESC'.
Command Calibration	Command call calibration function. Use command mode call calibration function, this can uses Standard, 4, 9, 16 or 25 points to calibrate E.g. Please run ms-dos prompt or command prompt c:\Program Files\PenMount Universa Driver\Dmcctrl.exe -calibration 0 (Standard Calibration) Dmcctrl.exe - calibration (\$) 0= Standard Calibration 4=Advanced Calibration 4 9=Advanced Calibration 9 16=Advanced Calibration 16 25=Advanced Calibration 25

Step 1. Please select a device then click “Configure”. You can also double click the device too.

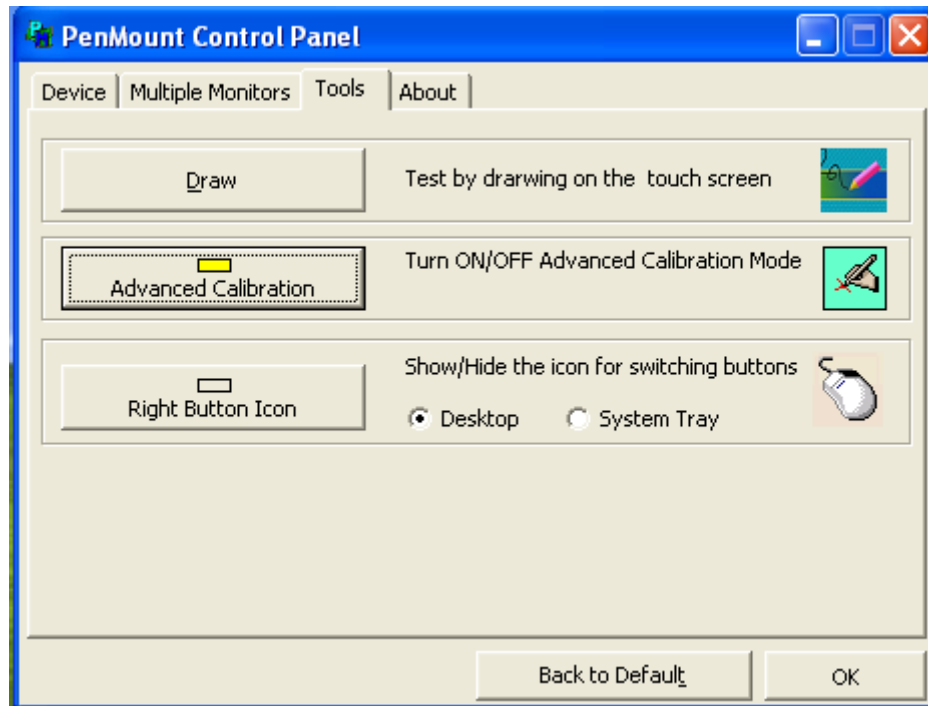


Step 2.Click “Standard Calibration” to start calibration procedure



NOTE: The older the touch screen, the more Advanced Mode calibration points you need for an accurate calibration. Use a stylus during Advanced Calibration for greater accuracy. Please follow the step as below:

Step 3. Come back to “PenMount Control Panel” and select **Tools** then click **Advanced Calibration**.



Step 4. Select **Device** to calibrate, then you can start to do **Advanced Calibration**.



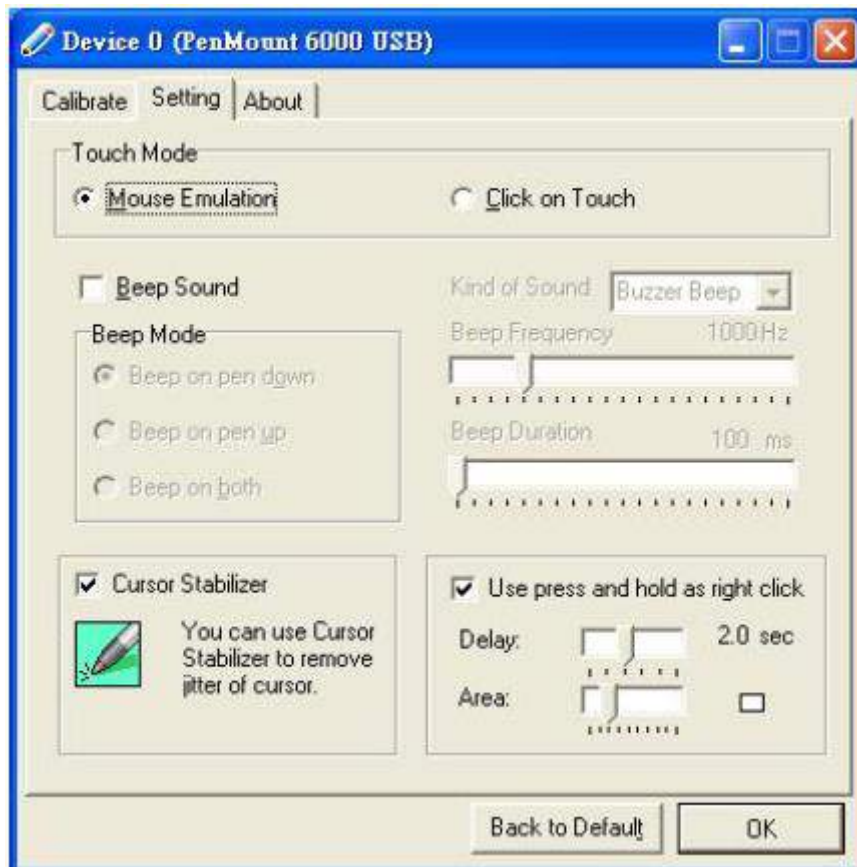
NOTE: Recommend to use a stylus during Advanced Calibration for greater accuracy.



Plot Calibration Data	Check this function and a touch panel linearity comparison graph appears when you have finished Advanced Calibration. The blue lines show linearity before calibration and black lines show linearity after calibration.
Turn off EEPROM storage	The function disable for calibration data to write in Controller. The default setting is Enable.

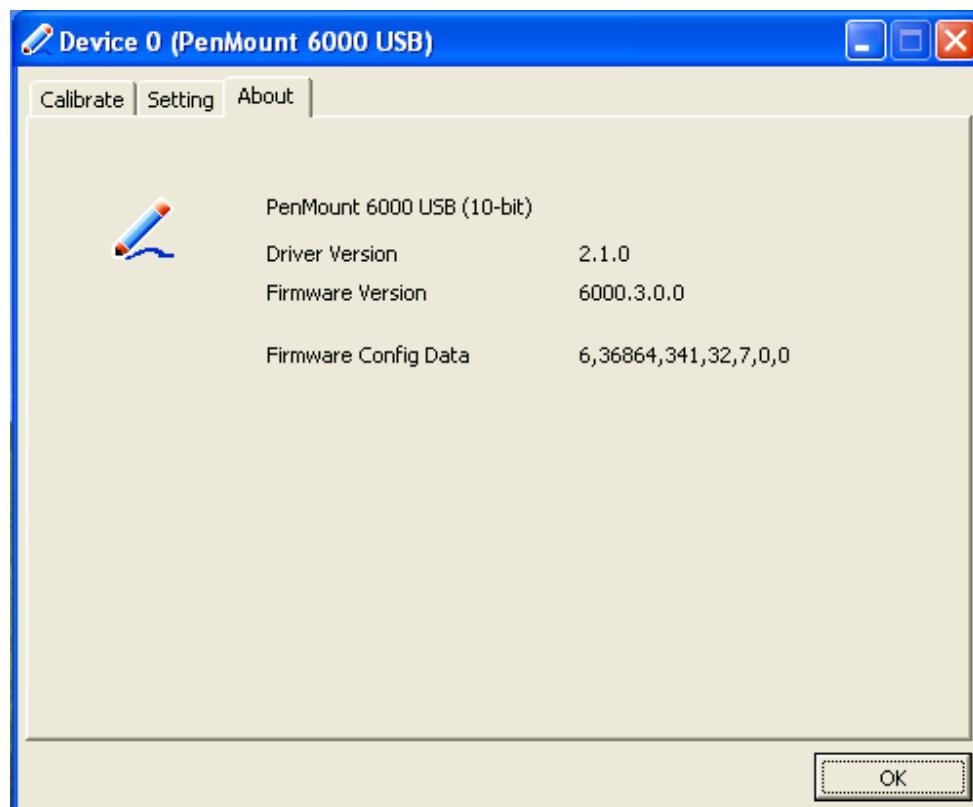
Setting

Touch Mode	<p>This mode enables and disables the mouse's ability to drag on-screen icons – useful for configuring POS terminals.</p> <p>Mouse Emulation – Select this mode and the mouse functions as normal and allows dragging of icons.</p> <p>Click on Touch – Select this mode and the mouse only provides a click function, and dragging is disabled.</p>
Beep Sound	<p>Enable Beep Sound – turns beep function on and off</p> <p>Beep on Pen Down – beep occurs when pen comes down</p> <p>Beep on Pen Up – beep occurs when pen is lifted up</p> <p>Beep on both – beep occurs when comes down and lifted up</p> <p>Beep Frequency – modifies sound frequency</p> <p>Beep Duration – modifies sound duration</p>
Cursor Stabilizer	Enable the function support to prevent cursor shake.
Use press and hold as right click	You can set the time out and area for you need



About

This panel displays information about the PenMount controller and driver version.



Multiple Monitors

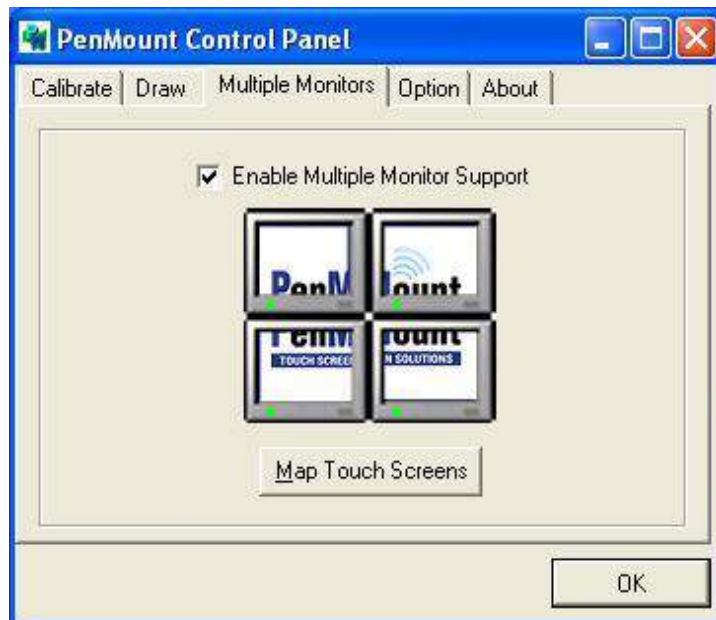
Multiple Monitors support from two to six touch screen displays for one system. The PenMount drivers for Windows 2000/XP support Multiple Monitors. This function supports from two to six touch screen displays for one system. Each monitor requires its own PenMount touch screen control board, either installed inside the display or in a central unit. The PenMount control boards must be connected to the computer COM ports via the RS-232 interface. Driver installation procedures are the same as for a single monitor. Multiple Monitors support the following modes:

Windows Extends Monitor Function
Matrox DualHead Multi-Screen Function
nVidia nView Function

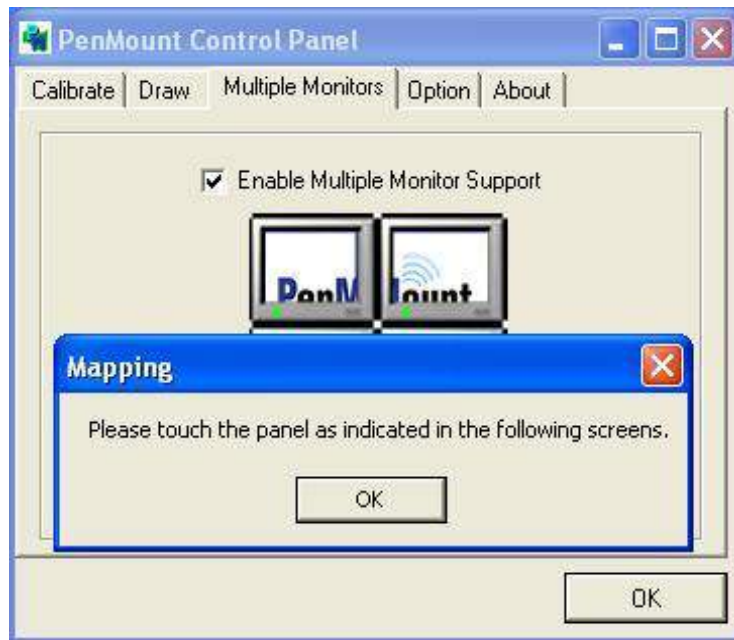
NOTE: The Multiple Monitor function is for use with multiple displays only. Do not use this function if you have only one touch screen display. Please note once you turn on this function the rotating function is disabled.

Enable the multiple display function as follows:

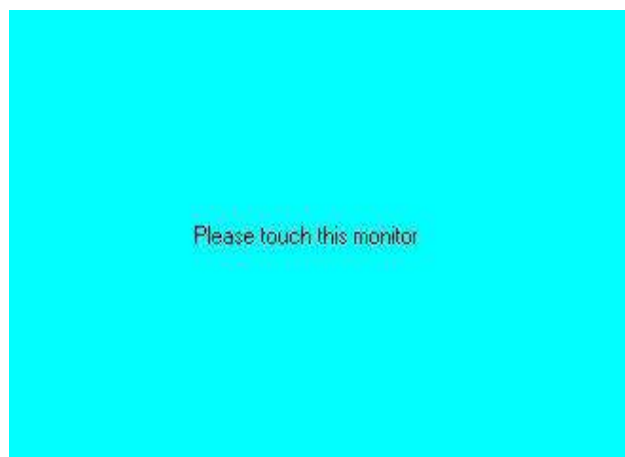
1. Check the **Enable Multiple Monitor Support** box; then click **Map Touch Screens** to assign touch controllers to displays.



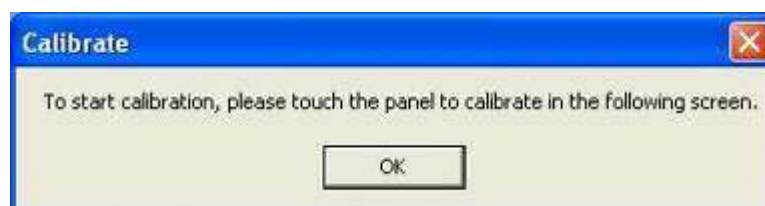
2. When the mapping screen message appears, click OK.



3. Touch each screen as it displays “Please touch this monitor”. Following this sequence and touching each screen is called **mapping the touch screens**.



4. Touching all screens completes the mapping and the desktop reappears on the monitors.
5. Select a display and execute the “Calibration” function. A message to start calibration appears. Click OK.



6. “Touch this screen to start its calibration” appears on one of the screens. Touch the screen.
7. “Touch the red square” messages appear. Touch the red squares in sequence.

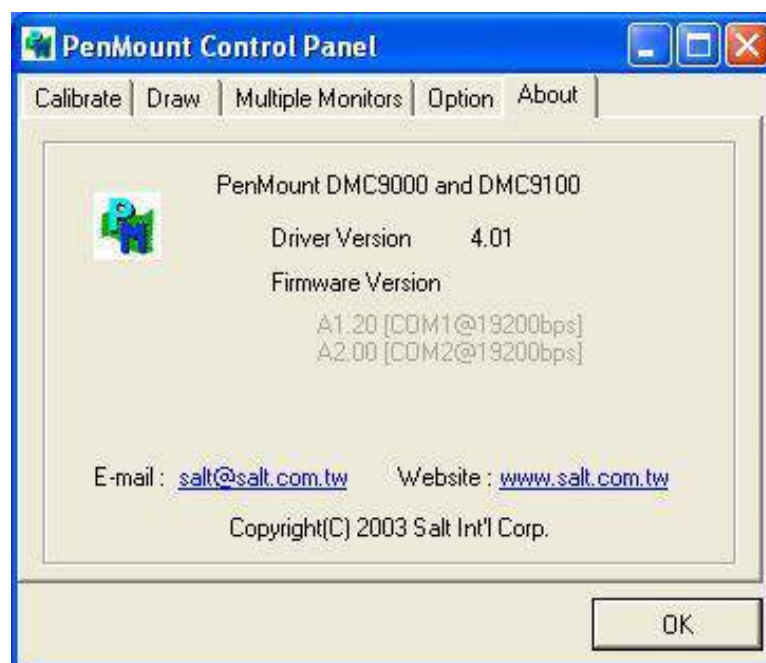
8. Continue calibration for each monitor by clicking **Standard Calibration** and touching the red squares.

NOTES:

1. If you use a single VGA output for multiple monitors, please do not use the **Multiple Monitor** function. Just follow the regular procedure for calibration on each of your desktop monitors.
2. The Rotating function is disabled if you use the Multiple Monitor function.
3. If you change the resolution of display or screen address, you have to redo **Map Touch Screens**, so the system understands where the displays are.

About

This panel displays information about the PenMount controller and this driver version.




PenMount Monitor Menu Icon

The PenMount monitor icon (PM) appears in the menu bar of Windows 2000/XP system when you turn on PenMount Monitor in PenMount Utilities.



PenMount Monitor has the following function



Control Panel	Open Control Panel Windows
Beep	Setting Beep function for each device
Right Button	When you select this function, a mouse icon appears in the right-bottom of the screen. Click this icon to switch between Right and Left Button functions. 
Exit	Exits the PenMount Monitor function.

PenMount Rotating Functions

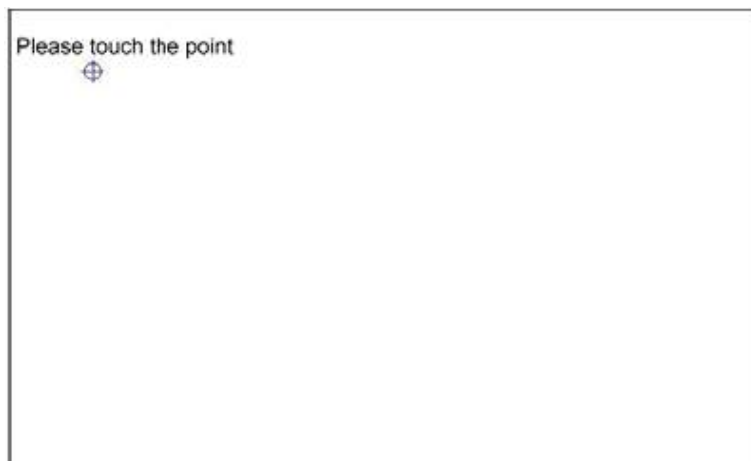
The PenMount driver for Windows 2000/XP supports several display rotating software packages.

Windows Me/2000/XP support display rotating software packages such as:

- Portrait's Pivot Screen Rotation Software
- ATI Display Driver Rotate Function
- nVidia Display Driver Rotate Function
- SMI Display Driver Rotate Function
- Intel 845G/GE Display Driver Rotate Function

Configuring the Rotate Function

1. Install the rotation software package.
2. Choose the rotate function (0°, 90°, 180°, 270°) in the 3rd party software. The calibration screen appears automatically. Touch this point and rotation is mapped.



NOTE: The Rotate function is disabled if you use Monitor Mapping.