



DATA SOUND

- LABORATORIES -

.....

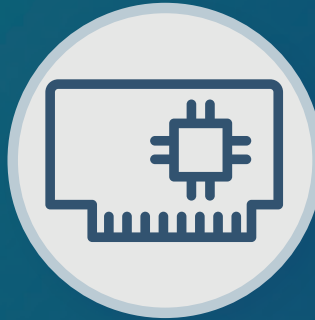
EMBEDDING THE FUTURE



**Electronic
Design**



**Panel
PC / HMI**



**Single Board
Computer**



**Industrial
PC**

Why choose DSL?

- Over 25 Years Industry Experience
- 5 Years Warranty on all Products
- Evaluation Products Available
- Lifetime Technical Support

Our Services

- Electronic Design
- Production Management
- Assembly and Test
- Bespoke BIOS Creation
- Industrial Embedded PC Solutions



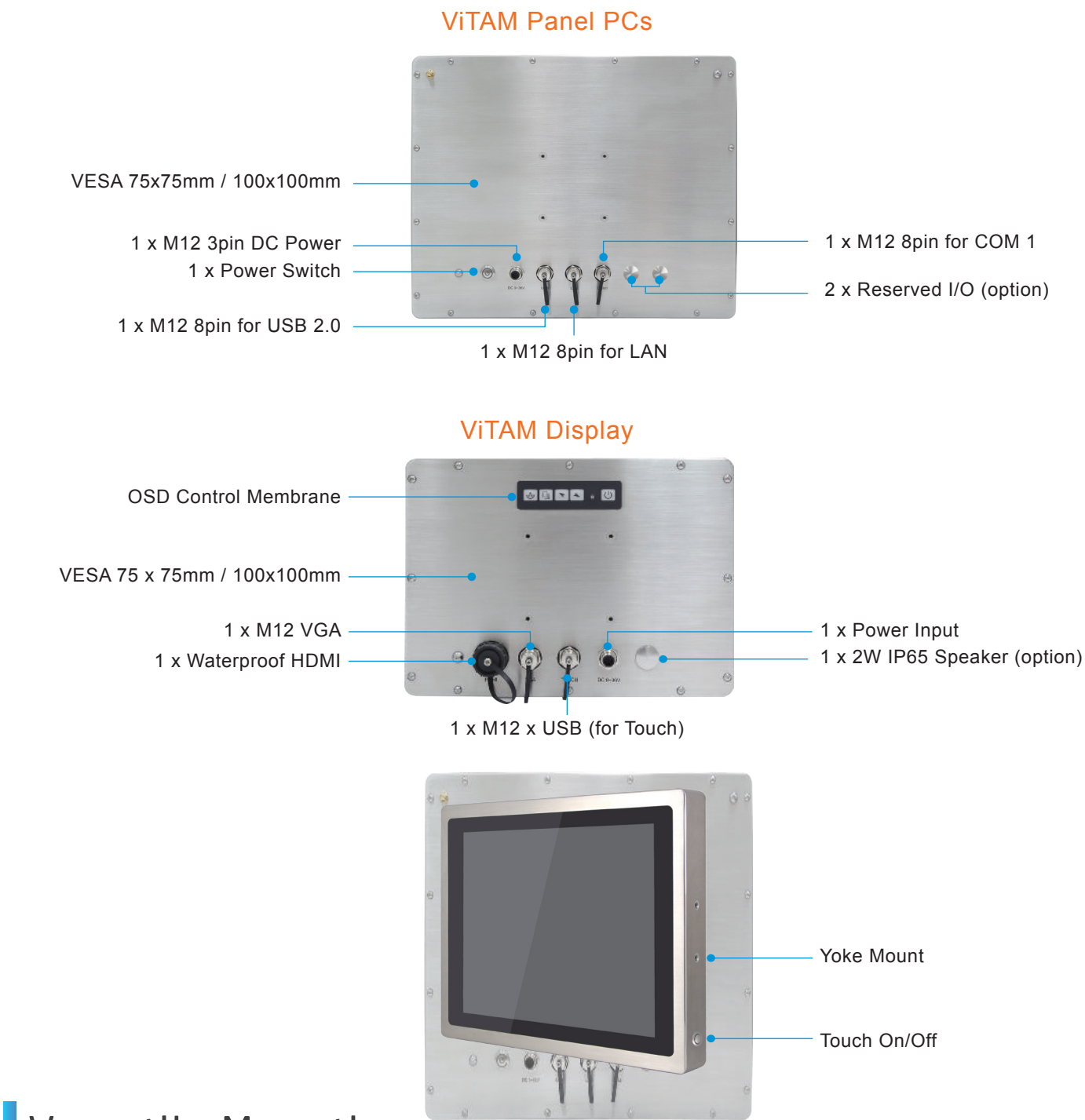
Call us on +44(0)1462 675530



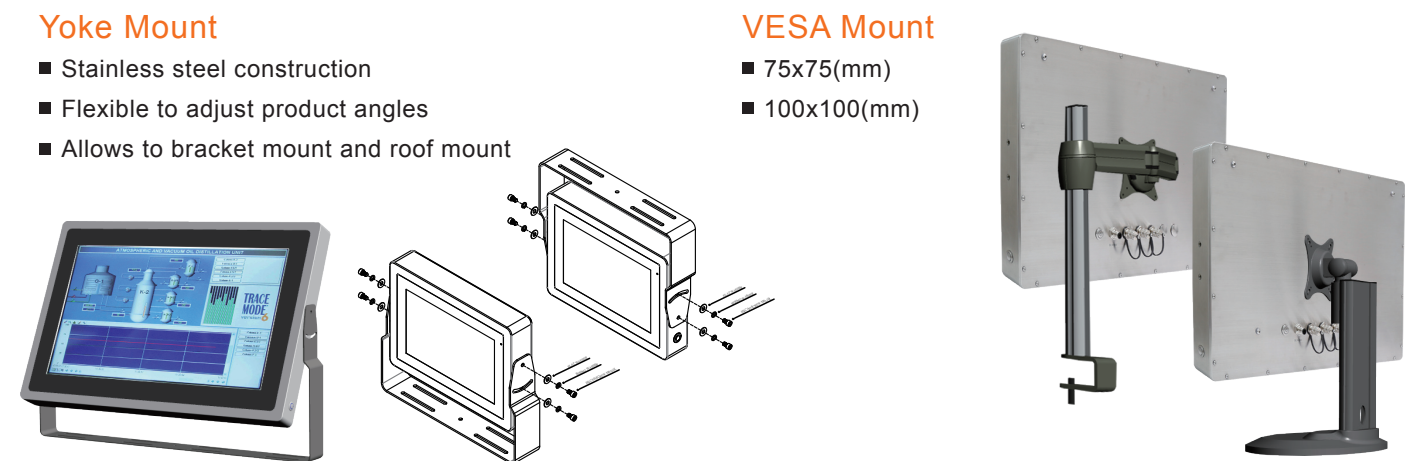
Email us at sales@dsl-ltd.co.uk



www.dsl-ltd.co.uk



Versatile Mounting



- Founded in 2004
- Headquarters: Taipei, Taiwan
- Worldwide offices: USA, Beijing, Shanghai and Shenzhen
- Manufacturing capability: System production center in Taiwan delivering system products. Board design and manufacturing in China

APLEX is committed to providing and developing superior and innovative technologies that enable our partners in every corner of the world to keep ahead of other competitors. By offering a full spectrum of quality products ranging from industrial panel PCs, HMI, industrial displays, embedded box PC to industrial boards, APLEX is proud to fulfill demands of our partners in a wide range of industrial applications fields, including factory automation, KIOSK, marine, railway, logistics and hazardous environment.

Contact Information

APLEX Taiwan Headquarters 15F-1, No. 186, Jian Yi Road, Zhonghe Dist., New Taipei City, 235 Taiwan Tel: +886-2-82262881 Fax: +886-2-82262883 E-mail: sales@aplex.com.tw	APLEX - USA 2065 Martin Ave., Suite 107 Santa Clara, CA 95050 Tel: +1-669-999-2500 Fax: +1-669-999-2499 E-mail: sales@aplextec.com	APLEX - ShenZhen 2F, Building 3, Sub-zone 5, Zhongguanhonghualing Industry South Zone, No.1213 Liu Xian Da Dao, Taoyuan Street, Nanshan District, Shenzhen, China Tel:+86-755-2664-7540/41/42-113 Fax:+86-755-2664-8326 E-mail: sales@aplex.com.tw
APLEX - Beijing 1120,Block A,LingLongTianDi Building, Haidian District,Beijing,China Tel: +86-10-56034912 Fax:+86-10-88504620 E-mail: sales@aplex.com.tw	APLEX - Shanghai 5B , 14 Building, NO.470 Guiping Road, Shanghai, zip 200233,China Tel: +86-21-54262303,54262305,54262306 Fax: +86-21-54262303 ext.120 E-mail: sales@aplex.com.tw	



ViTAM

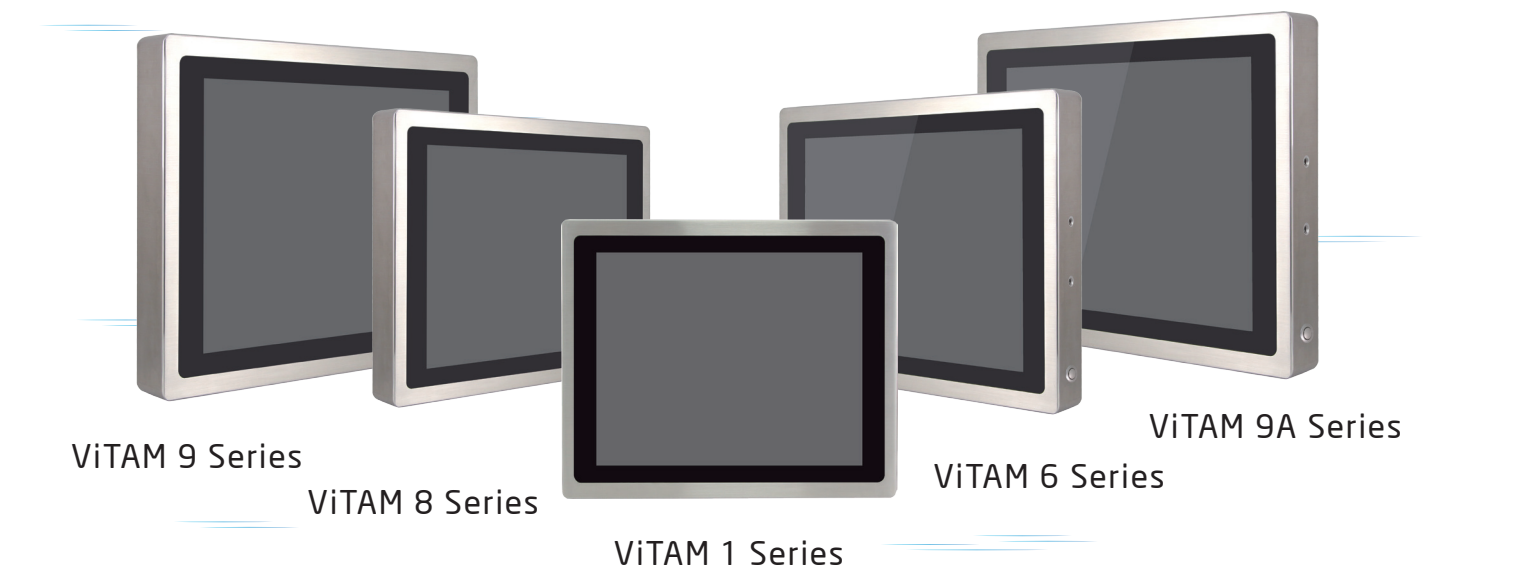
Stainless Steel Panel Solutions



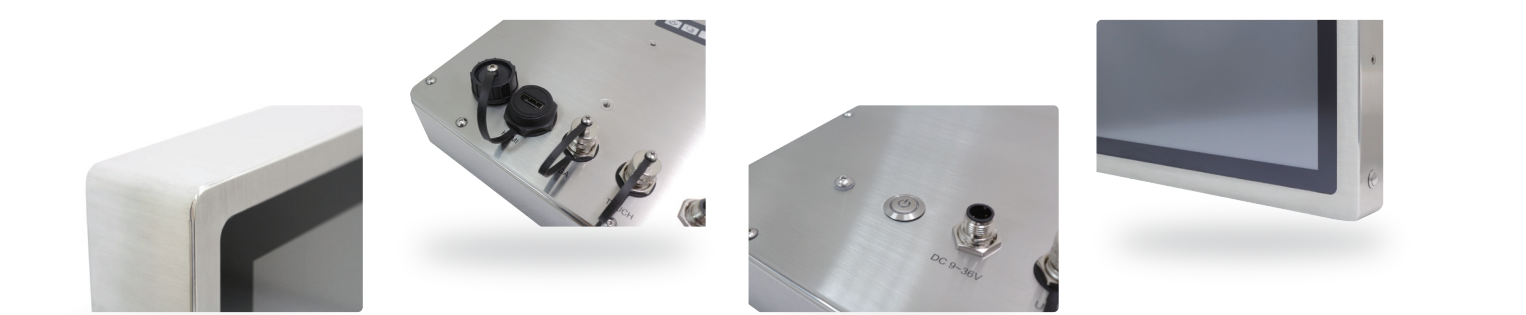
ViTAM Series

The Best, Most Complete Stainless Steel Panel Solutions Ever

APLEX ViTAM series features a wide range of platforms from Intel Atom, 4th Gen. Core i, 6th Gen. Core i to ARM based, and comes in displays and Panel PCs, making it ideal for versatile applications.



Product Highlight



Sunlight Readable Solutions

High Brightness: 1,000 nits

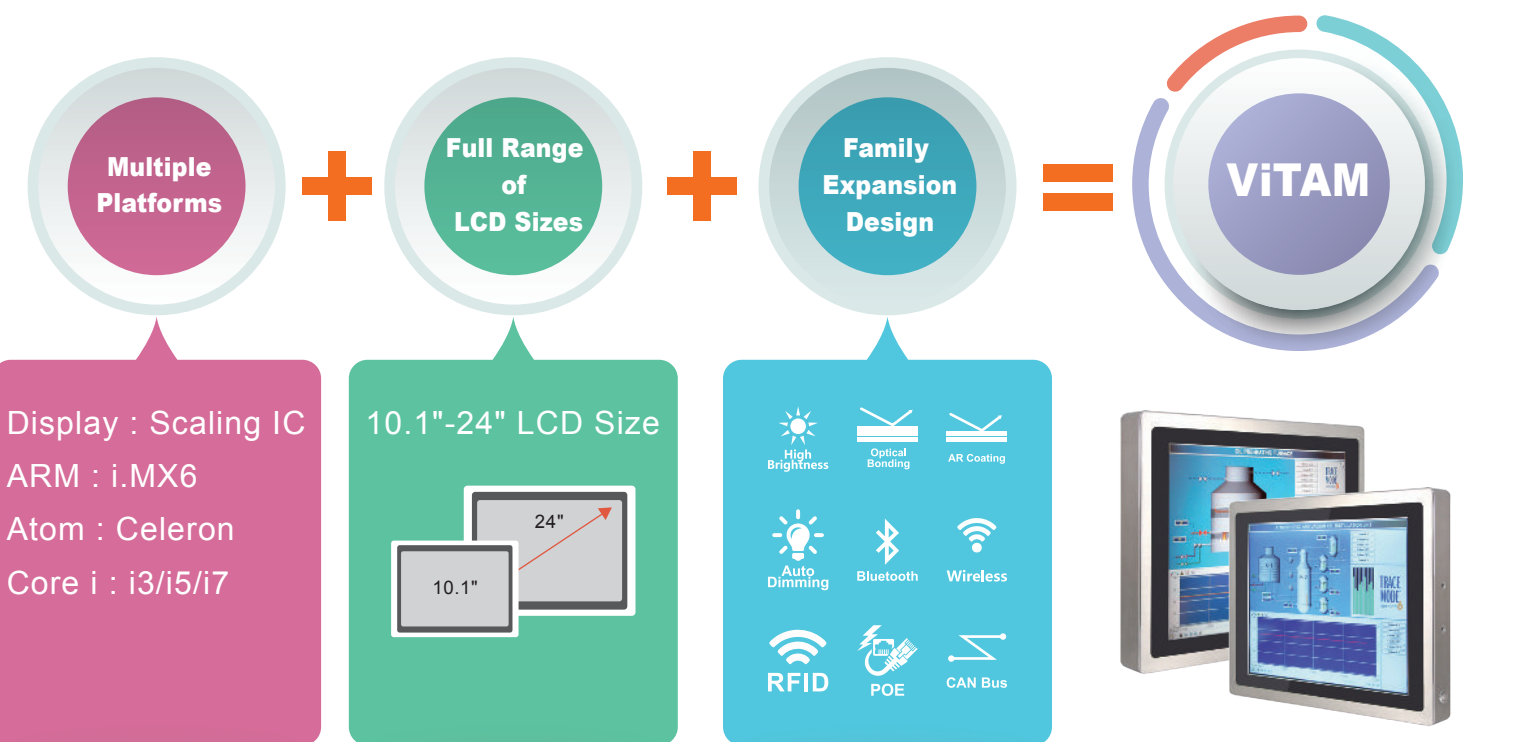
Anti-Reflection Coating

Dimming Functions

Four Ways to Adjust LCD Brightness

- Auto Dimming through Light Sensor
- OSD Keypad for Display
- BIOS Setting
- APP Utility

Concept



The ViTAM series is packed with the most popular expansion modules for industrial market and features a full range of panel sizes from 10.1" to 24". APLEX 's ViTAM series has solutions all you need in one place.

ViTAM Series Information (Standard)

Capacity	ViTAM 1 Seires	ViTAM 6 Seires	ViTAM 8 Seires	ViTAM 9 Seires	ViTAM 9A Seires
Category	Monitor	Web HMI i.MX6	Client (N2930/E3845)	Master (4 th Gen. Core i3/i5)	Master (6 th Gen. Core i)
Touch Screen	PCT / Resistive / Glass				
10.1" (-20°C~60°C)	●	●	●	NA	NA
12.1" (-20°C~60°C)	●	●	●	TBD	TBD
15" (-20°C~60°C)	●	●	●	●	●
15.6"	●	NA	●	●	●
17" (-20°C~60°C)	●	NA	●	●	●
19"	●	NA	●	●	●
21.5"	●	NA	●	●	●
24"	●	NA	●	●	●
Operating System	NA	Linux 3.2/4.4 Android 4.2.2/5.1 Windows Embedded Compact 7	Windows 7 Embedded Enterprise Windows Embedded Standard 7 Windows Embedded 8.1 Industry Pro Windows 10 IoT 2016		

Expansion Capability

PoE Module (25W)

- Cost savings in network installation & energy management
- Flexible and ideal for remote control management
- No need for power cables

RFID Module

- Read-write module enables data to be changed over time
- Built in IP66 waterproof design
- External Cableless

CAN bus Module

TB-528CAN2

- 2 x CAN
- Support CANopen Protocol

TB-553CAN2 (TB-215)

- 2 x CAN
- Support CANopen Protocol

Motherboards

6th Gen. Intel Core i, 4th Gen. Intel Core i, Intel® Celeron, ARM®-based, Multi Input

AD board

ViTAM Optional Selection Guide

Series Name	ViTAM 1 Series	ViTAM 6 Series	ViTAM 8 Series	ViTAM 9 Series	ViTAM 9A Series
Capacity					
PoE (10.1"-15.6" Only)	NA	●	●	NA	NA
RFID	NA	●	●	●	●
CAN	NA	●	●	●	●
Dimming	●	●	●	●	●
High Brightness (1,000 nits)	●	●	●	●	●
Optical Bonding	●	●	●	●	●
AR Coating	●	●	●	●	●
WiFi/BT	NA	●	●	●	●
SS316 Enclosure	●	●	●	●	●