

Industrial Computing Products and Services

Panel PC's



Industrial PC's



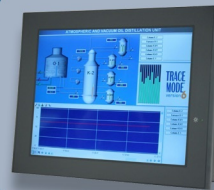
SBC's



Electronic Design



Industrial Displays



Embedding the future



Why Choose DSL?

- ✓ Lifetime technical support
- ✓ Fully customisable products
- ✓ Product branding (bezel colours + company logos)
- ✓ Free pre-installation of OS and your software



Our Services

- ✓ Electronic Design
- ✓ Production Management
- ✓ Assembly and test
- ✓ Bespoke BIOS creation



sales@dsl-ltd.co.uk

or call us on +44 (0)1462 675530



EBOX-333x Series, LAN x 1, RS-232, SATA

Model Type	EB-3330-SS	EB-3330-C1	EB-3330-C2	EB-3330-C3	EB-3330-C4	
	EB-3332-SS	EB-3332-C1	EB-3332-C2	EB-3332-C3	EB-3332-C4	
Processor	DM&P Vortex86DX2 (933MHz)					
BIOS	AMI BIOS					
Memory	Onboard 1GB DDR2 for 3330 Series/ Onboard 2GB DDR2 for 3332 Series					
VGA	Integrated Graphics Chip/ D-Sub 15-pin					
Maximum Resolution	1920 x 1440 pixels					
Ethernet	10/100 Mbps LAN x 1 (RJ-45 connector, Built-in PXE diskless boot)					
USB 2.0	External: 3 ports (Front x 2, Rear x 1) Internal: 1 port					
HD Audio	Line out					
I/O	SD Slot	1x				
	SATA	1x				
	COM1	N/A	RS-232	RS-232	RS-232	RS-232
	COM2		RS-232	RS-232	RS-232	
	COM3		N/A	N/A	RS-232	RS-232
COM4	N/A			RS-232		
Auto Power On	Yes					
Power	DC +8V~+24V					
Dimensions	115 x 115 x 35mm					
Unit Net Weight	510g					
Operation Temp.	5~50°C					
Certifications	CE, FCC, VCCI					
Optional	1. Mic input 2. Internal SD Card slot 3. TTL Level RS-232 4. mPCIe (2.5" SATA HDD not support)					
Note	RS-232 COM ports in Full 9pin					

04

Features:

- DM&P Vortex86DX2 (933MHz)
- Onboard 1GB/ 2GB DDR2
- SATA DOM, 2.5" HDD, SSD support
- mSATA support (mSATA to SATA adapter required)
- SD, SDHC support
- VESA mounting support
- Fanless design
- 10/100 Mbps LAN x 1
- WiFi Dongle support (Optional)
- PXE Diskless Boot
- USB 2.0 port x 4
- RS-232 Up to 4 ports (Optional)
- Auto Power On support
- Ultra low power

