

Industrial Computing

Products and Services

Panel PC's



Industrial PC's



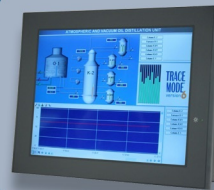
SBC's



Electronic Design



Industrial Displays



Embedding the future



Why Choose DSL?

- ✓ Lifetime technical support
- ✓ Fully customisable products
- ✓ Product branding (bezel colours + company logos)
- ✓ Free pre-installation of OS and your software



Our Services

- ✓ Electronic Design
- ✓ Production Management
- ✓ Assembly and test
- ✓ Bespoke BIOS creation



sales@dsl-ltd.co.uk

or call us on +44 (0)1462 675530



EBOX-336x Series, LAN x 2, RS-485, CANbus, SATA

Model Type	EB-3360-L2B1C1851	EB-3360-L2B1C2851	EB-3360-L2B1C1852	EB-3360-L2B1852
	EB-3362-L2B1C1851	EB-3362-L2B1C2851	EB-3362-L2B1C1852	EB-3362-L2B1852
Processor	DM&P Vortex86DX3 (1GHz)			
BIOS	AMI BIOS			
Memory	Onboard 1GB DDR3 for 3360 Series/ Onboard 2GB DDR3 for 3362 Series			
VGA	Integrated Graphics Chip/ D-Sub 15-pin			
Maximum Resolution	1920 x 1080 pixels			
Ethernet	10/100 Mbps LAN x 1, 1G LAN x 1 (RJ-45 connector, Built-in PXE diskless boot)			
USB 2.0	External: 3 ports (Front x 2, Rear x 1) Internal: 1 port			
HD Audio	Line out			
I/O	SD Slot	1x		
	SATA	1x		
	COM1	RS-485	RS-485	RS-485
	COM2	N/A	RS-232	RS-485
	COM3	RS-232	RS-232	RS-232
COM4	CANbus	CANbus	CANbus	CANbus
Auto Power On	Yes			
Power	DC +8V~+24V			
Dimensions	115 x 115 x 35mm			
Unit Net Weight	510g			
Operation Temp.	5~50°C			
Certifications	CE, FCC, VCCI			
Optional	1. Mic input 2. Internal SD Card slot 3. TTL Level RS-232 4. mPCIe (2.5" SATA HDD not support)			
Note	RS-232 COM ports in Full 9pin			

Features:

- DM&P Vortex86DX3 (1GHz)
- Onboard 1GB/ 2GB DDR3
- SATA DOM, 2.5" HDD, SSD support
- mSATA support (mSATA to SATA adapter required)
- SD, SDHC support
- VESA mounting support
- Fanless design
- 10/100 Mbps LAN x 1, 1 Gbps LAN x 1
- WiFi Dongle support (Optional)
- PXE Diskless Boot
- USB 2.0 port x 4
- RS-485 Up to 2 ports (Optional)
- RS-232 Up to 2 ports (Optional)
- CANbus port x 1
- Auto Power On support
- Ultra low power

