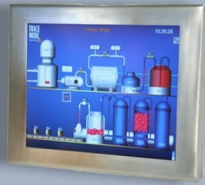


Industrial Computing Products and Services

Panel PC's



Industrial PC's



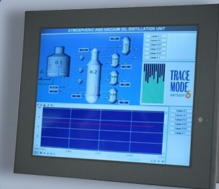
Electronic Design



SBC's



Industrial Displays



Why Choose DSL?

- ✓ Lifetime technical support
- ✓ Fully customisable products
- ✓ Product branding (bezel colours + logos)
- ✓ Free pre-installation of OS and software

Our Services

- ✓ Electronic Design
- ✓ Production Management
- ✓ Assembly and test
- ✓ Bespoke BIOS creation



sales@dsl-ltd.co.uk

or call us on +44 (0)1462 675530



DIN PC-333x Series

Model Type	D-3330-SS	D-3330-C1851	D-3330-C2	D-3330-C4	D-3330-851221	D-3330-851221C2	
	D-3332-SS	D-3332-C1851	D-3332-C2	D-3332-C4	D-3332-851221	D-3332-851221C2	
Processor	DM&P Vortex86DX2 (933MHz)						
BIOS	AMI BIOS						
Memory	Onboard 1GB DDR2 for 3330 Series/ Onboard 2GB DDR2 for 3332 Series						
VGA	Integrated Graphics Chip/ D-Sub 15-pin						
Maximum Resolution	1920 x 1440 pixels						
Ethernet	10/100 Mbps LAN x 1, 1G LAN x 1 (RJ-45 connector, Built-in PXE diskless boot)						
USB 2.0	External: 2 ports (Front x 2) Internal: 1 port (space reserved dimension 33 x 20mm)						
I/O	SD Slot	1x (Internal)					
	SATA	1x					
	COM1	N/A	RS-232	RS-232	RS-232	RS-485	RS-485
	COM2		RS-485	RS-232	RS-232	RS-422	RS-422
	COM5		N/A	N/A	RS-232	N/A	RS-232
	COM6		N/A	N/A	RS-232	N/A	RS-232
COM6	N/A		N/A	RS-232	N/A	RS-232	
Auto Power On	Yes						
Power	DC +8V~+24V (Pluggable Terminal Block 3-Pin 5.00mm Pitch)						
Dimensions	152 x 104 x 54mm						
Unit Net Weight	760g						
Operation Temp.	5~50°C						
Certifications	CE, FCC, VCCI						
Optional	1. Mic input/ Line out 2. TTL Level RS-232						
Note	RS-232 COM ports in Full 9pin						

Model Type	D-3330-852	D-3330-852C2	D-3330-221C1	D-3330-222	D-3330-222C2	
	D-3332-852	D-3332-852C2	D-3332-221C1	D-3332-222	D-3332-222C2	
Processor	DM&P Vortex86DX2 (933MHz)					
BIOS	AMI BIOS					
Memory	Onboard 1GB DDR2 for 3330 Series/ Onboard 2GB DDR2 for 3332 Series					
VGA	Integrated Graphics Chip/ D-Sub 15-pin					
Maximum Resolution	1920 x 1440 pixels					
Ethernet	10/100 Mbps LAN x 1, 1G LAN x 1 (RJ-45 connector, Built-in PXE diskless boot)					
USB 2.0	External: 2 ports (Front x 2) Internal: 1 port (space reserved dimension 33 x 20mm)					
I/O	SD Slot	1x (Internal)				
	SATA	1x				
	COM1	RS-485	RS-485	RS-422	RS-422	RS-422
	COM2	RS-485	RS-485	RS-232	RS-422	RS-422
	COM5	N/A	RS-232	N/A	N/A	RS-232
	COM6		RS-232	N/A	N/A	RS-232
Auto Power On	Yes					
Power	DC +8V~+24V (Pluggable Terminal Block 3-Pin 5.00mm Pitch)					
Dimensions	152 x 104 x 54mm					
Unit Net Weight	760g					
Operation Temp.	5~50°C					
Certifications	CE, FCC, VCCI					
Optional	1. Mic input/ Line out 2. TTL Level RS-232					
Note	RS-232 COM ports in Full 9pin					

Features:

- DM&P Vortex86DX2 (933MHz)
- Onboard 1GB/ 2GB DDR2
- SATA DOM support
- SATA 2.5" HDD, SSD support (Optional)
- mSATA support (mSATA to SATA adapter required)
- SD, SDHC support (Internal)
- DIN rail mounting support
- Fanless design
- 10/100 Mbps LAN x 1, 1Gbps LAN x 1
- WiFi Dongle support (Optional)
- PXE Diskless Boot
- USB 2.0 port x 3
- RS-232 Up to 4 ports (Optional)
- RS-485 Up to 2 ports (Optional)
- RS-422 Up to 2 ports (Optional)
- Auto Power On support
- Pluggable Terminal Block 3-Pin 5.00mm Pitch

