

Industrial Computing Products and Services

Panel PC's



Industrial PC's



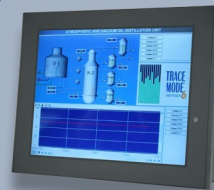
SBC's



Electronic Design



Industrial Displays



Embedding the future



Why Choose DSL?

- ✓ Lifetime technical support
- ✓ Fully customisable products
- ✓ Product branding (bezel colours + company logos)
- ✓ Free pre-installation of OS and your software



Our Services

- ✓ Electronic Design
- ✓ Production Management
- ✓ Assembly and test
- ✓ Bespoke BIOS creation



sales@dsl-ltd.co.uk

or call us on +44 (0)1462 675530



EBOX-3330 Series, VGA, LAN x 1, RS-232

Table with columns for Model Type (EB-3330-A1 to EB-3330-C4), Processor, BIOS, Memory, VGA, Ethernet, USB (2.0), HD Audio, SD Slot, SATA, COM1, COM2, COM3, COM4, Auto Power On, Power, Dimensions, Unit Net Weight, Operation Temp., Certifications, Optional, and Note. Includes a list of features like High performance, Fanless design, and VESA mounting support.



EBOX-3330 Series, HDMI, LAN x 1, RS-232

Table with columns for Model Type (EB-3330-S50MI to EB-3330-C4DMI), Processor, BIOS, Memory, VGA, Ethernet, USB (2.0), HD Audio, PS2, SD Slot, SATA, COM1, COM2, COM3, COM4, Auto Power On, Power, Dimensions, Unit Net Weight, Operation Temp., Certifications, Optional, and Note. Includes a list of features like High performance, Fanless design, and VESA mounting support.



EBOX-3330 Series, VGA, LAN x 1, RS-485

Table with columns for Model Type (EB-3330-851 to EB-3330-8522C2), Processor, BIOS, Memory, VGA, Ethernet, USB (2.0), HD Audio, SD Slot, SATA, COM1, COM2, COM3, COM4, Auto Power On, Power, Dimensions, Unit Net Weight, Operation Temp., Certifications, Optional, and Note. Includes a list of features like High performance, Fanless design, and VESA mounting support.



EBOX-3330 Series, HDMI, LAN x 1, RS-485

Table with columns for Model Type (EB-3330-851DMI to EB-3330-8522C2DMI), Processor, BIOS, Memory, VGA, Ethernet, USB (2.0), HD Audio, PS2, SD Slot, SATA, COM1, COM2, COM3, COM4, Auto Power On, Power, Dimensions, Unit Net Weight, Operation Temp., Certifications, Optional, and Note. Includes a list of features like High performance, Fanless design, and VESA mounting support.



EBOX-3330 Series, VGA, LAN x 1, RS-422

Table with columns for Model Type (EB-3330-221 to EB-3330-2222C2), Processor, BIOS, Memory, VGA, Ethernet, USB (2.0), HD Audio, SD Slot, SATA, COM1, COM2, COM3, COM4, Auto Power On, Power, Dimensions, Unit Net Weight, Operation Temp., Certifications, Optional, and Note. Includes a list of features like High performance, Fanless design, and VESA mounting support.



EBOX-3330 Series, HDMI, LAN x 1, RS-422

Table with columns for Model Type (EB-3330-221DMI to EB-3330-2222C2DMI), Processor, BIOS, Memory, VGA, Ethernet, USB (2.0), HD Audio, PS2, SD Slot, SATA, COM1, COM2, COM3, COM4, Auto Power On, Power, Dimensions, Unit Net Weight, Operation Temp., Certifications, Optional, and Note. Includes a list of features like High performance, Fanless design, and VESA mounting support.



EBOX-3330 Series, VGA, LAN x 2, RS-232

Table with columns for Model Type (EB-3330-L2S5 to EB-3330-L2C4), Processor, BIOS, Memory, VGA, Ethernet, USB (2.0), HD Audio, SD Slot, SATA, COM1, COM2, COM3, COM4, Auto Power On, Power, Dimensions, Unit Net Weight, Operation Temp., Certifications, Optional, and Note. Includes a list of features like High performance, Fanless design, and VESA mounting support.



EBOX-3330 Series, HDMI, LAN x 2, RS-232

Table with columns for Model Type (EB-3330-L2S5DMI to EB-3330-L2C4DMI), Processor, BIOS, Memory, VGA, Ethernet, USB (2.0), HD Audio, PS2, SD Slot, SATA, COM1, COM2, COM3, COM4, Auto Power On, Power, Dimensions, Unit Net Weight, Operation Temp., Certifications, Optional, and Note. Includes a list of features like High performance, Fanless design, and VESA mounting support.



EBOX-3330 Series, VGA, LAN x 2, RS-485

Table with columns for Model Type (EB-3330-L2 851 to EB-3330-L2 8522C2), Processor, BIOS, Memory, VGA, Ethernet, USB (2.0), HD Audio, SD Slot, SATA, COM1, COM2, COM3, COM4, Auto Power On, Power, Dimensions, Unit Net Weight, Operation Temp., Certifications, Optional, and Note. Includes a list of features like High performance, Fanless design, and VESA mounting support.



EBOX-3330 Series, HDMI, LAN x 2, RS-485

Table with columns for Model Type (EB-3330-L2 851DMI to EB-3330-L2 8522C2DMI), Processor, BIOS, Memory, VGA, Ethernet, USB (2.0), HD Audio, PS2, SD Slot, SATA, COM1, COM2, COM3, COM4, Auto Power On, Power, Dimensions, Unit Net Weight, Operation Temp., Certifications, Optional, and Note. Includes a list of features like High performance, Fanless design, and VESA mounting support.



EBOX-3330 Series, VGA, LAN x 2, RS-422

Table with columns for Model Type (EB-3330-L2221 to EB-3330-L2222C2), Processor, BIOS, Memory, VGA, Ethernet, USB (2.0), HD Audio, SD Slot, SATA, COM1, COM2, COM3, COM4, Auto Power On, Power, Dimensions, Unit Net Weight, Operation Temp., Certifications, Optional, and Note. Includes a list of features like High performance, Fanless design, and VESA mounting support.



EBOX-3330 Series, HDMI, LAN x 2, RS-422

Table with columns for Model Type (EB-3330-L2 221DMI to EB-3330-L2222C2DMI), Processor, BIOS, Memory, VGA, Ethernet, USB (2.0), HD Audio, PS2, SD Slot, SATA, COM1, COM2, COM3, COM4, Auto Power On, Power, Dimensions, Unit Net Weight, Operation Temp., Certifications, Optional, and Note. Includes a list of features like High performance, Fanless design, and VESA mounting support.

